

CHRISTIE'S 佳士得

頌德堂藏
中國宋代
瓷器

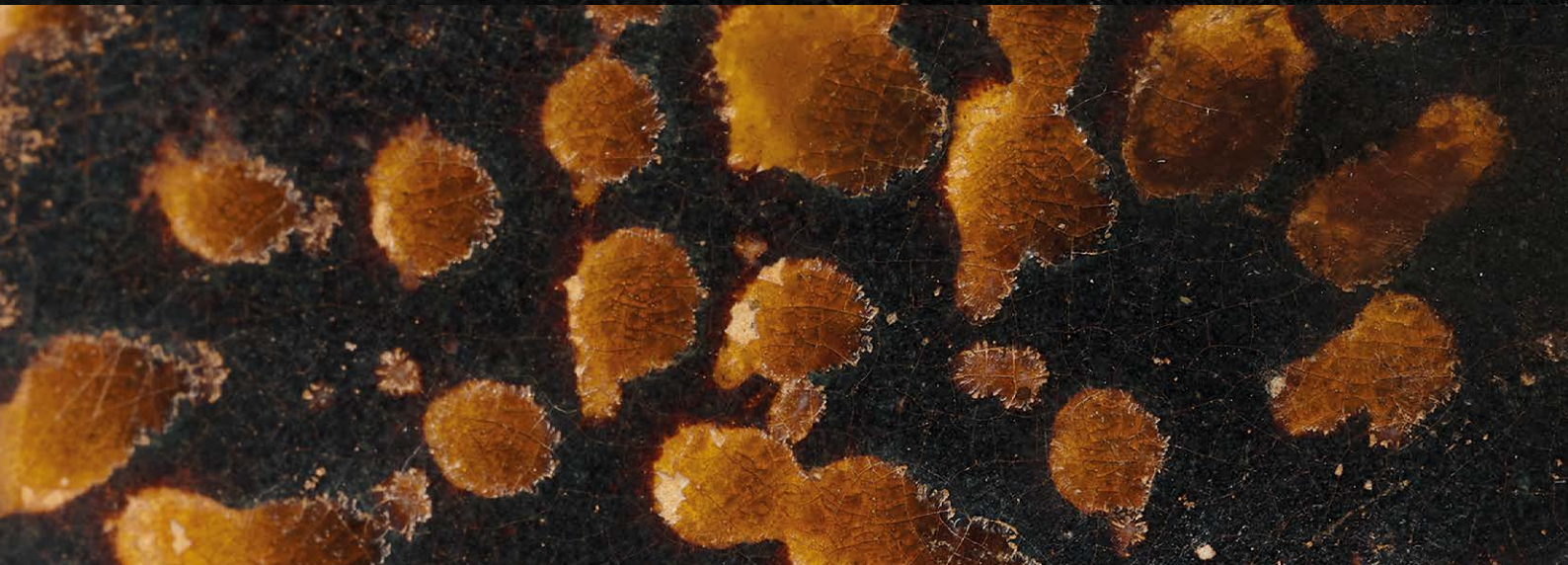
淡掃蛾眉

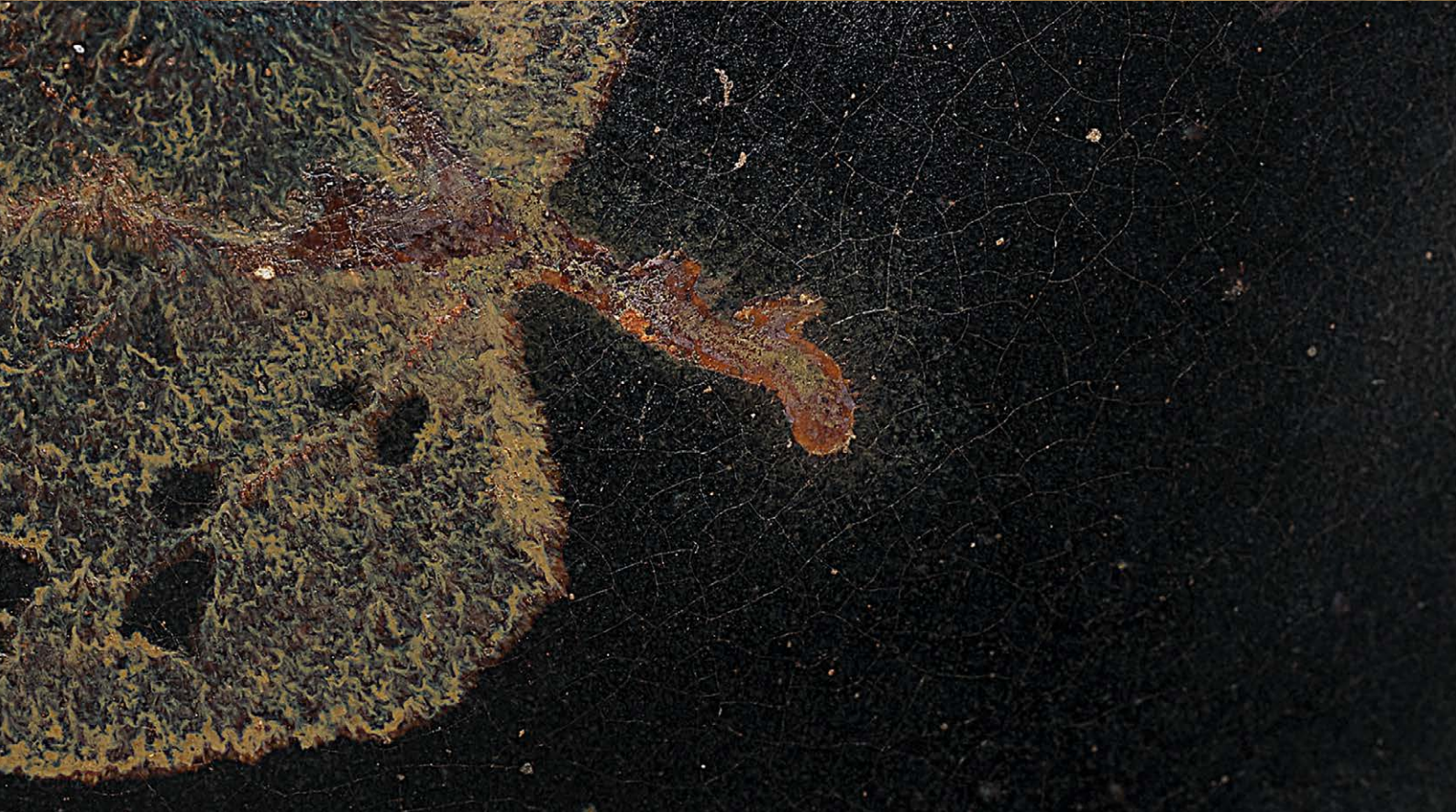


THE
SONGDE TANG
COLLECTION

Song Dynasty Ceramics

Hong Kong, 3 December 2021 · 香港 2021年12月3日





SPECIALISTS AND SERVICES FOR THIS AUCTION

SPECIALISTS & LIAISON



Pola Antebi



Chi Fan Tsang



Marco Almeida



Ruben Lien



Liang-Lin Chen



Sherese Tong



Timothy Lai



Cecilia Zi



Yunhan Sun



Dai Dai



Felix Pei



Masahiko Kuze

CHINESE CERAMICS AND WORKS OF ART

HONG KONG

Pola Antebi,
International Director &
Head of Private Sales
Tel: +852 2978 9950
Chi Fan Tsang,
International Director
Tel: +852 2978 9954
Marco Almeida,
Specialist Head of
Department
Tel: +852 2978 6810
Liang-Lin Chen,
Specialist Head of Sale
Tel: +852 2978 6725
Timothy Lai,
Associate Specialist
Tel: +852 2978 9943
Cecilia Zi, Associate Specialist
Tel: +852 2978 9958
Yunhan Sun, Junior Specialist
Tel: +852 2978 6863
Fax: +852 2973 0521

BEIJING

Dai Dai, Senior Specialist
Felix Pei, Senior Specialist
Tel: +86 (0) 10 8583 1766
Fax: +86 (0) 10 8572 7901

SHANGHAI

Sherese Tong, Specialist
Tel: +86 (0) 21 2226 1512
Fax: +86 (0) 21 6355 1767

TAIPEI

Ruben Lien, Senior Specialist
Tel: +886 2 2322 0010
Fax: +886 2 2736 4856

TOKYO

Masahiko Kuze,
Associate Vice President
Tel: +81 362 671 787

SALE CO-ORDINATORS

Yvonne Jiang
yvonnejiang@christies.com
Tel: +852 2978 9955
Celine Liu
celineliu@christies.com
Tel: +852 2978 6810
Calista Cheung
calistacheung@christies.com
Tel: +852 2978 6734
Fax: +852 2973 0521

GLOBAL MANAGING DIRECTOR

Heidi Yang
Tel: +852 2978 6804
Fax: +852 2525 5398

REGIONAL MANAGING DIRECTOR

Nicole Wright
Tel: +852 2978 9952
Fax: +852 2525 8157

HEAD OF SALE MANAGEMENT

Samantha Yuen
Tel: +852 2978 6703
Fax: +852 2973 0521

SERVICES

WRITTEN AND TELEPHONE BIDS & CHRISTIE'S LIVE

Tel: +852 2978 9910
Email: bidsasia@christies.com

PADDLE REGISTRATION

Tel: +852 2760 1766
Email: registrationasia@christies.com

AUCTION RESULTS

HK: +852 2760 1766
UK: +44 (0)20 7627 2707
US: +1 212 703 8080
Internet: www.christies.com

CATALOGUES ONLINE

Lotfinder®
Internet: www.christies.com

CLIENT SERVICES

Tel: +852 2760 1766
Email: infoasia@christies.com

POST-SALE SERVICES

Tel: +852 2760 1766
Email: postsaleasia@christies.com

www.christies.com

EMAIL

For general enquiries about this auction, emails should be addressed to the Sale Co-ordinator(s).

THE SONGDE TANG COLLECTION - SONG DYNASTY CERAMICS

頌德堂中國宋代瓷器 — 淡掃蛾眉

FRIDAY 3 DECEMBER 2021 · 2021年12月3日 (星期五)

AUCTION CODE AND NUMBER 拍賣名稱及編號

In sending Written and Telephone bids or making enquiries, this sale should be referred to as **DING-20195**
在遞交書面和電話競投表格或查詢拍賣詳情時，請註明拍賣名稱及編號為**定-20195**。

CONDITIONS OF SALE · BUYING AT CHRISTIE'S 業務規定 · 買方須知

This auction is subject to Important Notices and Explanation of Cataloguing Practice, Conditions of Sale · Buying at Christie's and reserves of the lots. [400]
此次拍賣受限於重要通知及目錄編列方法之說明、業務規定、買方須知及拍品底價。[400]

ENQUIRIES · 查詢

HK 香港：+852 2760 1766
UK 英國：+44 (0)20 7627 2707
US 美國：+1 212 703 8080



Scan to view
auction details
掃描以瀏覽拍賣詳情



Scan QR to access
Christie's WeChat
mini program.
掃描二維碼或微信搜索
“佳士得”小程序，
查閱全球拍賣資訊。



Follow us
關注佳士得
ChristiesAsia

CHRISTIE'S  LIVE
Bid live in Christie's salerooms worldwide

christies.com

AUCTION · 拍賣

Friday 3 December · 12月3日 (星期五)
2.00pm (Lots 2801-2840) · 下午2.00 (拍賣品編號2801-2840)
Location: Hall 3D, Hong Kong Convention and Exhibition Centre,
No.1 Harbour Road, Wanchai, Hong Kong
地點：香港灣仔港灣道1號香港會議展覽中心展覽廳3D
Tel 電話：+852 2760 1766 · Fax 傳真：+852 2760 1767

VIEWING · 預展

HONG KONG, Hong Kong Convention and Exhibition Centre

香港，香港會議展覽中心

Friday – Thursday, 26 November – 2 December · 11月26日至12月2日 (星期五至四)
10.30am – 6.30pm

HIGHLIGHTS PREVIEW · 精選拍品預展

TAIPEI, Taipei Marriott Hotel

台北，台北萬豪酒店

Saturday – Sunday, 23 – 24 October · 10月23至24日 (星期六至日)
11.00am – 6.00pm

AUCTIONEER · 拍賣官

Chen Liang-Lin

Please note that descriptions of Lots in this catalogue do not include references to conditions. Condition reports are available on request – please refer to the Important Notices at the back of the catalogue for further information.

敬請注意本拍賣目錄中沒有包括拍品狀況說明，若有需要，請向佳士得公司索取，本公司可以提供此報告。另外，敬請留意閱讀拍賣目錄背頁之《重要通告及目錄編列方法之說明》。

We may convert and display in our catalogues the HK\$ **estimates** in US\$. This is for the convenience of our clients only and is not binding in any way. The rate of exchange is fixed at the latest practical date prior to the printing of the catalogue and may change by the time of the sale. 我們可將港元**估價**轉換成美元並於目錄中顯示。這僅為方便我們的客戶而不具有任何法律約束力。該貨幣兌換率是根據最貼近日錄付印時的兌換率設定，所以可能與拍賣當日兌換率有差別。

CHRISTIE'S 佳士得



Mr. Lai Tak in Paris, circa 1980
黎德先生攝於巴黎，八十年代

糊口養家，觀賞研習，承傳分享。

寥寥片語概括了父親一生情繫中國文化藝術的心路歷程。

THE
SONGDE TANG
COLLECTION
Song Dynasty Ceramics

頌德堂藏中國宋代瓷器
淡掃蛾眉

The Songde Tang collection was formed from the 1960s to 1990s by a passionate connoisseur of Chinese art, Lai Tak.

Born in the 1920s in China, Mr. Lai later moved to Hong Kong where he set up an antique business in the 1950s. In the following decades he travelled tirelessly to acquire fine objects for his clients as well as his personal collection. Mr. Lai's taste for classical art and his personal aesthetic were very much influenced by his international experience, particularly in England and Japan.

The friendships he developed with fellow dealers and collectors during his 60 year career provided him with the most satisfaction and gratification. He was honoured to have been able to make contributions to museum collections in Mainland China and Hong Kong. Mr. Lai is remembered by friends and family by his motto *'antiques are the essence and the nourishment of my life'*.

This marks the second of a series of sales from the Songde Tang collection to be sold at Christie's Hong Kong, 'The Songde Tang Collection of Chinese Modern Paintings', was sold on 28 May 2010.

頌德堂主人黎德先生，生於上世紀二十年代，祖籍廣東，一九五零年初從國內移居香港並在荷里活道開設小店從事中國古玩藝術品買賣。在為口奔馳的日子裏漸漸培養出對中國文物的興趣，後因緣際會，開始走出香港，踏進國際古玩的舞台。其收藏品味，深受歐、美、日藏家及博物館所影響。

頌德堂收藏，始於六十年代，其涉獵範圍甚廣，但以中國瓷器，書畫，及藝術品為主。他在世時常說，“一生最大的得著，就是能把個人興趣融入終生職業。並能認識一眾文博界的新知舊友，分享收藏心得。”他還說“古董就是我的維生素，有令人延年益壽，去憂解煩之效。”

佳士得十分榮幸繼二零一零年，“藝海遺珍”頌德堂藏中國近現代畫之後，再一次呈獻這位一生與中國文玩，書畫結緣前輩的珍藏。



Mr. A.G.M. Maynard of Spink & Son,
Mr. Gan Geok-Eng, circa 1963
顏玉瑩先生，1963年

A Kau Chi Society meeting
求知雅集聚會

Mr. Gorō Sakamoto, circa 1991
坂本五郎氏，1991年



Mr. Xu Huping, Mrs. Tsui Tsin-tong,
Mr. and Mrs. Zhang Deqin and friends, circa 1993
徐湖平先生，徐展堂夫人，張德勤先生夫人，1993年

Mr. Tsui Tsin-tong, circa 1997
徐展堂先生，1997年

Mr. Tse Siu-Bong
謝兆邦先生

Mr. and Mrs. Zhang Deqin
張德勤先生夫人

2801

A RARE SMALL QINGBAI VASE

NORTHERN SONG DYNASTY (960-1127)

The vase is raised on a spreading foot rising towards the globular body below the trumpet neck supporting a cup-shaped mouth.

It is covered with a translucent glaze of aquamarine tone.

5¼ in. (14.5 cm.) high, box

HK\$60,000-80,000

US\$7,800-10,000

北宋 青白瓷盤口小瓶

此瓶體型小巧，造型精緻，其器形多見於北宋早期龍泉青瓷或磁州白釉的花瓶上，在青白瓷上出現則屬少見。



2802

A QINGBAI ZHADOU

NORTHERN SONG DYNASTY (960-1127)

The jar rises from a flat base towards a small globular body beneath a widely flared rim. The wide mouth is incised with a foliate scroll.

7 $\frac{1}{2}$ in. (18.9 cm.) diam., box

HK\$120,000-180,000

US\$16,000-23,000

EXHIBITED

University Museum and Art Gallery, The University of Hong Kong, *The Multiplicity of Simplicity - Monochrome wares from the Song to the Yuan dynasties*, 2012, no. 17

北宋 青白瓷刻花渣斗

展覽

香港大學美術博物館，《大繁若簡－宋金元朝的單色釉瓷》，2012年，圖版17號

近似的青白瓷渣斗可參考康蕊君編《玫茵堂中國陶瓷》，卷1，倫敦，1994-2010，編號620；及一例藏於香港大學美術博物館，刊於《大繁若簡：宋金元朝的單色釉瓷》，香港，2012年，展品16。





2803

**A FINE AND RARE QINGBAI
'LOTUS' CONICAL BOWL**

NORTHERN SONG DYNASTY (960-1127)

The bowl is exquisitely potted with wide flaring sides rising from a small foot ring. The interior is delicately carved with lotus blossoms growing elegantly from undulating stems amid water weeds and flower heads. It is covered overall with a pale blue glaze appearing lucid in areas where it pools.

7 in. (17.9 cm.) diam., box

HK\$240,000-300,000

US\$31,000-39,000

EXHIBITED

University Museum and Art Gallery, The University of Hong Kong, *The Multiplicity of Simplicity - Monochrome wares from the Song to the Yuan dynasties*, 2012, no. 2

北宋 青白瓷刻花纏枝蓮紋斗笠盃

展覽

香港大學美術博物館，《大繁若簡－宋金元朝的單色釉瓷》，2012年，圖版2號

此盃胎體輕薄，刻工凌厲，造型優美。斗笠形瓷盃在青白瓷器中是較少見的品種。

台北鴻禧美術館藏有一件器形及花紋相近的青白瓷刻花蓮紋斗笠盃，見於《中國歷代陶瓷選集》，台北，1990年，頁152。





2804

A QINGBAI FIGURE OF A DOG

SONG DYNASTY (960-1279)

The figure is freely modelled resting on its haunches, and is covered in a thin glaze of bluish tone.

3 in. (8 cm.) wide, box

HK\$20,000-30,000

US\$2,600-3,900

宋 青白瓷狗

小狗型態活潑生動，陶匠以手指黏貼堆砌其外形。此製陶手法，在宋代較為少見，可能是陶工做給小輩玩耍的即興之作。



2805

A FINE AND RARE QINGBAI FISH BASKET-FORM JAR AND COVER

SONG DYNASTY (960-1279)

Potted in the form of a woven bamboo basket and lid, both are covered in a translucent glaze of pale aquamarine tone.

3½ in. (9 cm.) high, Japanese wood box

HK\$80,000-100,000

US\$11,000-13,000

PROVENANCE

A Japanese private collection



宋 青白瓷漁簍形編竹紋蓋罐

來源

日本私人珍藏

蓋罐釉光亮丽，罐身呈漁簍形，飾竹編紋，帶有原配蓋子。此罐無論外形或飾紋在宋代青白瓷都甚為少見。



2806

**A QINGBAI FOLIATE RIM
CUP AND CUP STAND**

NORTHERN SONG DYNASTY (960-1127)

The cup has flared sides with six subtle petal-shaped lobes rising to a rim notched to conform to the lobed sides. The stand is potted with a central two-tiered platform, recessed at the top, all raised on a slightly splayed foot decorated with *ruyi*-form apertures. Both are covered with a translucent glaze of aquamarine tone

Cup stand: 5¼ in. (14.7 cm.) diam., box (2)

HK\$100,000-150,000

US\$13,000-19,000

Compare an almost identical *Qingbai* cup and cup stand illustrated by J. Ayers in *The Baur Collection - Chinese Ceramics*, volume 1, Geneva, 1968, plate no. A 120 and also illustrated on the front cover.

北宋 青白瓷盃及盃托

類同的青白瓷杯及托可參考《東京國立博物館圖版目錄-中國古陶磁篇》，東京，1965年，頁56；及 J. Ayers編《The Baur Collection》，第一冊，日內瓦，1968年，圖版A120。



2807

**A RARE QINGBAI
OCTAGONAL 'PRUNUS'
MEIPING AND COVER**

SONG DYNASTY (960-1279)

Both the vase and cover are of conforming octagonal shape and each facet is relief moulded with a prunus spray. The glaze of pale blue tone.

7¼ in. (18.5 cm.) high, box

HK\$200,000-300,000

US\$26,000-39,000

EXHIBITED

University Museum and Art Gallery, The University of Hong Kong, *The Multiplicity of Simplicity - Monochrome wares from the Song to the Yuan dynasties*, 2012, no. 15

Comparable *qingbai* octagonal vases with similar moulded decoration include one illustrated in *Porcelain Collected by Anhui Province Museum*, Beijing, 2002, p. 78, no. 62; the vase illustrated in *China's Jingdezhen Porcelain through the Ages*, Beijing, 1998, p. 226; the example sold at Christie's New York, 20 September 2005, lot 234; and another from Linyushanren Collection, sold at Christie's New York, 15 September 2016, lot 728.

南宋 青白瓷印花帶蓋八角梅瓶

展覽

香港大學美術博物館，《大繁若簡－宋金元朝的單色釉瓷》，2012年，圖版15號

此青白瓷印花八角梅瓶，外形精緻，印紋清晰，有原配蓋子更是難求。

安徽博物院藏有一對於1999年安徽省宿松縣孚玉山宋墓出土的青白瓷印花八角梅瓶（缺蓋），其外形與此瓶十分相近。另江西省博物館亦藏有類同的八角梅瓶。







2805



2808



2808

A RARE QINGBAI LOTUS-FORM CUP AND CUP STAND

NORTHERN SONG DYNASTY (960-1127)

The cup is well potted with petal-lobed sides, above a lotus blossom to the central medallion. The cup stand is moulded to the top with overlapping lotus petals. Both are covered in an attractive even greenish-blue glaze. The rims are bound in metal.

Cup stand: 7 in. (17.7 cm.) diam., boxes (2)

HK\$120,000-180,000

US\$16,000-23,000

EXHIBITED

University Museum and Art Gallery, The University of Hong Kong, *The Multiplicity of Simplicity - Monochrome wares from the Song to the Yuan dynasties*, 2012, no. 8

北宋 青白瓷刻花蓮瓣紋盃及盃托

展覽

香港大學美術博物館，《大繁若簡－宋金元朝的單色釉瓷》，2012年，圖版8號

宋代茶酒器有盃托、台盃與盤盃等，用途皆有別，此器屬盤盃，為宋代酒器之一，多見於北宋中晚期，其特點在於盤心不設台柱，現存數量非常稀少。

此青白瓷刻花盃及托造形特別，其底托以深刻蓮瓣紋裝飾，甚有浮雕味道，在宋代青白瓷上甚為少見。近例可參考瑞士日內瓦鮑氏珍藏青白瓷刻花蓮瓣紋斗笠盃，著錄於J. Ayers著《The Baur Collection》，第一冊，日內瓦，1968年，圖版A122。



2809

A RARE QINGBAI CENSER

NORTHERN SONG DYNASTY (960-1127)

The censer is potted with a flat everted mouth and a u-shaped body rising from a pagoda-like base. The upper section of the base is modelled with a stylised chrysanthemum-form skirt. It is covered with a pale bluish-white glaze.

4¾ in. (12.1 cm.) high, box

HK\$240,000–300,000

US\$31,000–39,000

EXHIBITED

University Museum and Art Gallery, The University of Hong Kong, *The Multiplicity of Simplicity - Monochrome wares from the Song to the Yuan dynasties*, 2012, no. 18

During the Song dynasty, burning incense became a scholarly pursuit, and was practiced in small interior settings. Exquisite incense burners, such as the present example, are most suitable for use in a scholar's studio. In the Northern Song painting *Tingqin tu* in the Palace Museum, Beijing, the main figure sits next to a *xiangji* on which a small censer, reminiscent of the present example, is seen burning incense. According to some scholars, this figure is probably Emperor Huizong himself.

Compare a large *qingbai* censer of similar form in the collection of the Tokyo National Museum, illustrated in the *Oriental Ceramics: the World's Great Collections*, vol. 1: Tokyo National Museum, Tokyo, 1982, no. 65.

北宋 青白瓷行爐

展覽

香港大學美術博物館，《大繁若簡－宋金元朝的單色釉瓷》，2012年，圖版18號

此香爐外型穩重端莊，釉色精美，器型可追溯至南北朝及唐代佛教壁畫中的鵝尾爐，可見於敦煌石窟，第172窟盛唐壁畫《日想觀》及現藏於大英博物館的唐代佛教畫作《觀音菩薩圖》中，因其外型可固定平放或手持行走，因此又名行爐，為佛教徒修持行香禮佛之用。器型至宋代，除去手柄後演變成與現今所見的外形，在宋代各大窯場亦有生產。

東京國立博物館藏一外形相近的青白瓷香爐，刊於大阪市立東洋陶磁美術館，宋代之青白瓷展 1994，圖 40。

另可參考一件相關的定窯白釉香爐，展於《玉貌清明：故宮珍藏兩宋瓷器精品集》，澳門藝術博物館，2012年，展品43。





2810

**A FINE AND VERY RARE
QINGBAI 'DRAGON' VASE**

SOUTHERN SONG DYNASTY (1127- 1279)

The globular vase with gently lobed sides divided by double ribs, is applied with a relief moulded dragon coiled around the neck, extending to the shoulder. The glaze of pale blue tone.

8¼ in. (20.8 cm.) high, Japanese wood box

HK\$ 180,000-250,000

US\$ 24,000-32,000

PROVENANCE

A Japanese private collection

南宋 青白瓷瓜棱形盤龍瓶

來源

日本私人珍藏

南宋時期江西青白瓷窯曾生產體型修長高大的盤龍蓋瓶，其質量一般比較粗糙，如此瓶般體型細小而造工精細者，則較難得。瓶口施釉工整不露胎骨，瓶身呈球狀瓜棱形，在宋代陶瓷中十分少見。

可參考一件外形相同的青白瓷盤龍瓶，現藏福建省博物館，刊於《中國陶瓷全集 16 宋元青白瓷》，上海，1984年，編號 30。

另一相關宋代龍泉青瓷鳳首瓶出版於《梅子初青（龍泉青瓷圖集）》，杭州，2005年，頁23，其球狀體型與此器十分相似。



2811

**A RARE LARGE CARVED
QINGBAI 'PEONY' BOWL**

NORTHERN SONG DYNASTY (960-1127)

The bowl is formed with a slightly everted foliate rim and is freely carved to the interior with two peonies and scrolling branches while the central medallion features a leafy spray. It is covered in an attractive pale glaze with a bluish tinge which pools within the crevices of the decoration, stopping at the mouth rim to expose the fine white body. 9 $\frac{1}{2}$ in. (23.8 cm.) diam., box

HK\$150,000-250,000

US\$20,000-32,000

PROVENANCE

An important Hong Kong family collection, acquired in the 1970's

EXHIBITED

University Museum and Art Gallery, The University of Hong Kong, *The Multiplicity of Simplicity - Monochrome wares from the Song to the Yuan dynasties*, 2012, no. 5

北宋 青白瓷刻花牡丹紋大盃

來源

重要香港家族珍藏，入藏於 1970 年代

展覽

香港大學美術博物館，《大繁若簡－宋金元朝的單色釉瓷》，2012 年，圖版 5 號

此盃無論外型或內刻的牡丹花紋，都帶有定州刻花瓷的影子，應是受河北定窯白瓷啟發的產品。

青白瓷大盃的口徑一般都在 22 公分以下，而此盃口徑達 24 公分，則較為少見。





2812

**A RARE QINGBAI MEIPING
AND COVER**

SONG DYNASTY (960-1279)

Both the vase and cover are covered with a translucent glaze of a lustrous bluish tone, the glaze on the vase ending above the foot revealing the white biscuit body.

8¾ in. (22.5 cm.) high, box

HK\$500,000-700,000

US\$65,000-90,000

EXHIBITED

Chugoku meito ten: Chugoku toji 2000-nen no seika (Exhibition of Chinese Pottery: Two Thousand Years of Chinese Ceramics), Tokyo, 1992, p. 58

University Museum and Art Gallery, The University of Hong Kong, *The Multiplicity of Simplicity - Monochrome wares from the Song to the Yuan dynasties*, 2012, no. 13 (one of two)

宋 青白瓷帶蓋梅瓶

展覽

《中国名陶展：中国陶磁2000年の精華》，東京，1992年，圖錄58頁

香港大學美術博物館，《大繁若簡－宋金元朝的單色釉瓷》，2012年，圖版13號

宋代青白瓷梅瓶一般瓶身多以刻花修飾，如此瓶般素潔無瑕的例子甚為罕見，能帶原配蓋子更為難得。此瓶線條優美，釉色光潤，可作宋代梅瓶典範。江西安義縣南宋淳祐五年（公元1249年）古墓中曾出土外形相似但瓶身有卷草刻花的青白瓷帶蓋梅瓶。

台北鴻禧美術館亦藏有外形相近的青白瓷刻如意紋帶蓋梅瓶，見於《中國歷代陶瓷選集》，台北，1990年，頁155。







2813

A FINE LARGE JUN PURPLE-SPLASHED BOWL

JIN DYNASTY (1115-1234)

The bowl is covered inside and out with a thick lavender-blue glaze. The interior is applied with two purplish-red splashes connected by a thin line. 9 in. (23 cm.) diam., box

HK\$240,000-300,000

US\$31,000-39,000

PROVENANCE

An important Hong Kong family collection, acquired in the 1970s

EXHIBITED

University Museum and Art Gallery, The University of Hong Kong, *The Multiplicity of Simplicity - Monochrome wares from the Song to the Yuan dynasties*, 2012, no. 88

Compare to a Jun bowl with an abstract purple splash to the interior, slightly smaller in size, which is illustrated *Beauty & Entirety - Ceramics of the Song Dynasty from The Palace Museum*, Museum of Art in Macau, 2012, plate no. 38.

金 鈞窯天青釉玫瑰斑大盃

來源

重要香港家族珍藏，入藏於1970年代

展覽

香港大學美術博物館，《大繁若簡 - 宋金元朝的單色釉瓷》，2012年，圖版88號

可參考兩件飾類似簡潔抽象紫斑的鈞窯大盃，一件藏北京故宮博物院，刊於《玉貌清明：故宮珍藏兩宋瓷器精品集》，澳門，2012年，圖38；一件藏倫敦大英博物館大維德基金會，藏品編號PDF A3。





2814

A LARGE JUN DISH

NORTHERN SONG DYNASTY (960-1127)

The shallow dish is well potted with rounded sides rising to the slightly inverted rim. The dish is covered overall with a glaze of pale lavender tone which thins to mushroom at the rim, and continues onto the countersunk base which has five spur marks.

9¾ in. (24.7 cm.) diam., box

HK\$400,000-600,000

US\$52,000-77,000

PROVENANCE

An old Hong Kong family collection

EXHIBITED

University Museum and Art Gallery, The University of Hong Kong, *The Multiplicity of Simplicity - Monochrome wares from the Song to the Yuan dynasties*, 2012, no. 91

北宋 鈞窯天青釉大盤

來源

香港家族珍藏

展覽

香港大學美術博物館，《大繁若簡－宋金元朝的單色釉瓷》，2012年，圖版91號

近似例可參考倫敦大英博物館大維德基金會藏鈞窯天青釉盤，館藏編號 PDF A2。亦可參考一件尺寸較大的鈞窯天青釉盤，2018年3月22於紐約佳士得拍賣，拍品538號。



2815

A FINE LARGE JUN PURPLE-SPLASHED BOWL

JIN-YUAN DYNASTY (1115-1368)

The deep bowl is covered with a pale blue glaze applied with purplish-red splashes suffused with copper green spots. The thick glaze on the exterior stops short of the finely cut foot to expose the biscuit body.

6 $\frac{7}{8}$ in. (17.5 cm.) diam., box

HK\$300,000-500,000

US\$39,000-65,000

PROVENANCE

An important Hong Kong family collection, acquired in the 1970s

EXHIBITED

University Museum and Art Gallery, The University of Hong Kong, *The Multiplicity of Simplicity - Monochrome wares from the Song to the Yuan dynasties*, 2012, no. 90

金/元 鈞窯天青釉玫瑰紫斑溫盤

來源

重要香港家族珍藏，入藏於1970年代

展覽

香港大學美術博物館，《大繁若簡 - 宋金元朝的單色釉瓷》，2012年，圖版90號

相關例子見於《東洋陶磁名品圖錄》，松岡美術館，1991年，頁45；及《鈞瓷雅集：故宮博物院藏及出土鈞窯瓷器薈萃》，北京，2013年，圖48。







2816

**A RARE HENAN DONGGOU
SKY-BLUE GLAZED DISH**

NORTHERN SONG-JIN DYNASTY (960-1234)

The dish is covered overall with a crackled, intense azure-blue glaze thinning to a mushroom tone at the mouth rim and an area on the underside. The foot is unglazed, revealing the pale grey body.

7 in. (17.8 cm.) diam., box

HK\$80,000-120,000

US\$11,000-15,000

北宋／金 東溝窯天青釉盤

東溝窯位於河南汝州市山峪鄉東溝村東，以燒造青瓷聞名，產品兼具汝窯及鈞窯風格，胎骨多呈灰色，釉質較鈞窯細膩平滑，釉下氣泡亦較鈞瓷細密，釉色有天青、蔥綠、粉青，但以天青居多，器物多開細小冰裂紋，但亦有不開片的例子。





2817

A RARE CARVED YUE 'BIRDS AND FLOWERS' BOX AND COVER

FIVE DYNASTIES-NORTHERN SONG DYNASTY
(907-1127)

The domed cover is carved with alternating
birds and flowers. The box is carved to the
exterior with overlapping petals.

3¼ in. (8.4 cm.) wide, Japanese wood box

HK\$80,000-120,000

US\$11,000-15,000

PROVENANCE

A Japanese private collection

EXHIBITED

Sun Museum, *Celestial Cases- Antique Boxes
of China*, Hong Kong, 2017, p. 25

五代／北宋

越窯青瓷刻花鴛鴦蓮瓣紋瓜形蓋盒

來源

日本私人珍藏

展覽

—新美術館，《百年好合：中國古盒藝術》，
香港，2017年，圖錄25頁

此越窯青瓷瓜形盒體形小巧，其器身刻鴛鴦花紋，
活潑靈巧，與同期刻劃簡單的瓜形蓋盒有明顯分
別，盒身花紋可能受唐代晚期金銀器的裝飾風格
影響。



2818

A FINE AND RARE
LONGQUAN CELADON
'GOOSE AND REEDS'
SHALLOW BOWL

NORTHERN SONG DYNASTY (960-1127)

The central medallion depicts a single goose flying amidst reeds, clenching a branch in its beak, encircled by a border of scrolling foliage on the cavetto. The exterior is decorated with two bands of lotus petals radiating upwards from the foot. It is covered inside and out with a glaze of a lustrous bluish-celadon tone.

10 in. (25.6 cm.) diam., Japanese wood box

PROVENANCE

A Japanese private collection

EXHIBITED

Sun Museum, *Of Mist and Lushly Green, Longquan Celadon from Song to Ming Dynasties*, Hong Kong, 2016, no. 1

北宋 龍泉青瓷劃花鴻雁蘆草紋盤

來源

日本私人珍藏

展覽

一新美術館，《宋元明龍泉青瓷》，香港，2016年，展品1號

類同的龍泉青瓷蘆雁紋盤可參考《中國美術展シリーズ宋元の美術》，大阪市立美術館，1978年，頁18；另一例著錄於《世界陶磁全集—12—宋》，東京，1977年，頁199。

HK\$180,000-250,000

US\$24,000-32,000



2819

A FINE SMALL LONGQUAN CELADON DRUM-FORM JAR AND COVER

SOUTHERN SONG DYNASTY (1127-1279)

Both sides of the jar are applied with moulded flower and ring handle appliqués with a ring of raised bosses to the lid and base. It is covered with a glaze of powder-green tone.

3 in. (7.7 cm.) diam., box

HK\$200,000-300,000

US\$26,000-39,000

PROVENANCE

An Important Hong Kong family collection, acquired in the 1970s

EXHIBITED

University Museum and Art Gallery, The University of Hong Kong, *The Multiplicity of Simplicity - Monochrome wares from the Song to the Yuan dynasties*, 2012, no. 78

Compare with a similar example published by Regina Krahl, *Chinese Ceramics from the Meiyintang Collection*, Vol. 3 (II), London, 2006, no. 1576.

南宋 龍泉青瓷鼓形蓋盒

來源

香港重要家族珍藏，入藏於 1970 年代

展覽

香港大學美術博物館，《大繁若簡－宋金元朝的單色釉瓷》，2012 年，圖版 78 號

此蓋盒青釉瑩潤，線條精簡，器腹的梅花銜環貼紋清晰，與整體器形匹配。

一件造形相同的龍泉青瓷鼓形蓋盒曾展出於蘇黎世雷特伯格博物館攻茵堂展館；另可參考一北宋耀州窯刻花鼓形蓋盒，刊於鴻禧美術館《中國歷代陶瓷選集》，台北，1990 年，頁 112。





2820

A RARE LONGQUAN
CELADON OCTAGONAL
'EIGHT TRIGRAMS' TRIPOD
CENSER

NORTHERN SONG DYNASTY (960-1127)

Each section of the faceted body is moulded with the Eight Trigrams within square borders, all above a band of flames, and encircled by lotus petals at the base.

4⅞ in. (10.5 cm.) high, box

HK\$ 120,000-200,000

US\$ 16,000-26,000

北宋 龍泉青瓷八方八卦爐

此青釉香爐釉色及亮度都帶有耀州窯青瓷的影子，唯八方造型及器身的八卦印紋卻鮮有在耀州窯青瓷上出現，其胎土密度與耀州窯亦有差異，因此極有可能是龍泉青瓷受北方耀州窯影響之下的產品。

與此器外形及花紋相同，但體型略小的北宋龍泉八卦爐，可參考《梅子初青：龍泉青瓷圖集》，西冷印社出版，2005年，頁56。



2821

A SMALL MOULDED LONGQUAN CELADON VASE

SOUTHERN SONG DYNASTY (1127-1279)

The vase is moulded with a central peony meander above a band of upright petals, the neck flanked by a pair of ring handles. It is covered overall in an attractive glaze of rich blue-green tone.

5½ in. (14.4 cm.) high, box

HK\$200,000-300,000

US\$26,000-39,000

PROVENANCE

The Edward T. Chow Collection, Part Two, sold at Sotheby's London, 16 December 1980, lot 297

EXHIBITED

University Museum and Art Gallery, The University of Hong Kong, *The Multiplicity of Simplicity - Monochrome wares from the Song to the Yuan dynasties*, 2012, no. 67

南宋 龍泉窯粉青釉印牡丹紋雙環瓶

來源

仇焱之舊藏，倫敦蘇富比，1980年12月16日，拍品297號

展覽

香港大學美術博物館，《大繁若簡－宋金元朝的單色釉瓷》，2012年，圖版67號

上世紀七十年代韓國新安郡海底曾打撈出大量宋末元初的瓷器，其中包括數件與此拍品外形相近的龍泉印花雙環瓶，體型大小各異，刊於《新安海底文物》，國立中央博物館，1977年。



2822

A FINE AND VERY RARE LONGQUAN CELADON 'PHOENIX' VASE

NORTHERN SONG DYNASTY (960-1127)

The ribbed neck is flanked by a pair of moulded phoenixes above the baluster body, carved in relief with four registers of overlapping lotus petals. The lotus petals are detailed with finely incised lines denoting the veining of the leaves. It is covered overall with a pale green glaze with a slight yellow tint.

12¾ in. (32.3 cm.) high, box

HK\$500,000-800,000

US\$65,000-100,000

PROVENANCE

An old English collection, acquired in the early 1970s

EXHIBITED

University Museum and Art Gallery, The University of Hong Kong, *The Multiplicity of Simplicity - Monochrome wares from the Song to the Yuan dynasties*, 2012, no. 64

Compare to a Northern Song dynasty Yue celadon vase with dish-shaped mouth and bow-string bands on the neck, exhibited in *Mostra D'Arte Cinese/ Exhibition of Chinese Art*, Venice, 1954, cat.no.398. See also a Northern Song dynasty Ding vase, illustrated in *Sekai toji zenshu*, vol.2, Tokyo, 1977, p. 161.

Compare with a similar Longquan vase with a plain neck in the Longquan Museum, Zhejiang Province.



北宋 龍泉青瓷雙鳳耳弦紋盤口瓶

來源

英國私人珍藏，入藏於1970年代

展覽

香港大學美術博物館，《大繁若簡－宋金元朝的單色釉瓷》，2012年，圖版64號。

此瓶綫條優美，全器刻花工整俐落，通體施淡青泛黃釉，瓶肩上的浮雕鳳鳥紋十分罕見，與瓶頸上七弦竹節紋互相輝映，相得益彰。在已知關於北宋早及中期龍泉青瓷的資料中暫時未發現有相同例子。

可參考其他北宋早期以弦紋作裝飾的盤口瓶，包括一件北宋越窯青瓷弦紋盤口瓶，1954年於威尼斯《Arte Cinese Chinese Art》展中展出，圖錄圖版398號；及一件北宋定窯白釉弦紋穿帶瓶，著錄於《世界陶磁全集—12—宋》，東京，1977年，頁161。

另可比較浙江省龍泉博物館藏一件造型近似但頸部無弦紋的盤口瓶。





2823

**A LONGQUAN CELADON
HANDLED CUP**

SOUTHERN SONG DYNASTY (1127-1279)

The vessel is applied along one edge of the rim with a bracket-shaped flange above a loop ring handle. It is covered overall under a glaze of bluish-celadon colour with some smoky tones. 4 $\frac{1}{2}$ in. (11.3 cm.) wide, box

HK\$80,000-120,000

US\$11,000-15,000

PROVENANCE

An English family collection, acquired in the 1970s

EXHIBITED

University Museum and Art Gallery, The University of Hong Kong, *The Multiplicity of Simplicity - Monochrome wares from the Song to the Yuan dynasties*, 2012, no. 51

南宋 龍泉青瓷把盃

來源

英國家族珍藏，入藏於1970年代

展覽

香港大學美術博物館，《大繁若簡 - 宋金元朝的單色釉瓷》，2012年，圖版 51 號

英國大維德基金會藏一件相同的龍泉把盃，現展於大英博物館，館藏編號 PDF 212，可資比較。



2824

A VERY RARE CARVED LONGQUAN CELADON 'PEONY' BOX AND COVER

SONG-YUAN DYNASTY (960-1368)

Of circular form, the cover is carved with an elaborated peony spray, covered overall with an attractive green glaze stopping short of the rims and the ring foot of the box where it reveals the unglazed body.

6¾ in. (17 cm.) diam., box

HK\$400,000-600,000

US\$52,000-77,000

PROVENANCE

An English family collection, acquired in the 1980s

EXHIBITED

University Museum and Art Gallery, The University of Hong Kong, *The Multiplicity of Simplicity - Monochrome wares from the Song to the Yuan dynasties*, 2012, no. 77
Sun Museum, *Celestial Cases- Antique Boxes of China*, Hong Kong, 2017, p. 40

宋／元 龍泉青瓷拱花牡丹紋蓋盒

來源

英國家族珍藏，入藏於1980年代

展覽

香港大學美術博物館，《大繁若簡 - 宋金元朝的單色釉瓷》，2012年，圖版77號

一新美術館，《百年好合：中國古盒藝術》，香港，2017年，圖錄40頁

盒蓋面以浮雕刻劃單朵牡丹盛開於枝端，花朵凌跨整個盒面。此裝飾手法及構圖在龍泉青瓷中十分罕見，應受宋代漆器上的花卉設計及剔漆技法所影響。在已發表的資料中暫時還未發現近似的龍泉青瓷蓋盒。

北京故宮博物院藏有一元代龍泉窯青釉單朵牡丹紋印花模，刊於《玉貌清明：故宮珍藏兩宋瓷器精品集》，澳門，2012年，圖錄圖版158，其印模上的花紋造型與此拍品十分相似。





2825

A RARE SMALL LONGQUAN CELADON JAR AND COVER

SOUTHERN SONG DYNASTY (1127-1279)

The high shouldered jar is potted with a convex base encircled by an unglazed foot. The lotus leaf-form cover with an undulating rim. Both the jar and cover are covered overall in an attractive glaze of rich blue-green tone.

2¾ in. (7 cm.) high, stand, Japanese wood box

HK\$ 120,000-180,000

US\$ 16,000-23,000

PROVENANCE

A Japanese private collection, acquired in the 1990s



南宋 龍泉窯粉青釉荷葉式小蓋罐

來源

日本私人珍藏，入藏於1990年代

小罐釉色柔和，器形小巧，荷葉形罐蓋與簡素罐身外形匹配，線條優美。其淡粉青釉色予人一種寧靜平和的感覺。

—龍泉青瓷荷葉形小蓋於1972年湖州妙西渡善村陳家山南宋嘉熙三年（1239年）墓出土，其蓋形及釉色與此蓋罐上的荷葉蓋基本一致，見於《青色流年：全國出土浙江紀年瓷圖集》，文物出版社，2017年，頁279。另可參考一體型略大、器身刻蓮瓣紋配荷葉蓋的南宋龍泉蓋罐，藏大英博物館，刊於Nigel Wood著《Chinese Glazes》，倫敦，2011年，頁78。



2826

A FINE LONGQUAN CELADON LOTUS-FORM DISH

SOUTHERN SONG DYNASTY (1127-1279)

The dish with shallow flared sides rising from a short foot is moulded on the exterior with a band of upright lotus petals, covered inside and out with a thick unctuous glaze of pale sea-green tone with the exception of the foot ring. 6 $\frac{1}{2}$ in. (16.8 cm.) diam., Japanese wood box

HK\$200,000-400,000

US\$26,000-52,000

PROVENANCE

A Japanese private collection, acquired in the 1990s

EXHIBITED

Sun Museum, *Of Mist and Lushly Green, Longquan Celadon from Song to Ming Dynasties*, Hong Kong, 2016, no. 3



南宋 龍泉窯梅子青釉蓮瓣盤

來源

日本私人珍藏，入藏於1990年代

展覽

一新美術館，《宋元明－龍泉青瓷》，香港，2016年，圖錄圖版3號

南宋晚期以蓮瓣紋作裝飾的龍泉青瓷器十分常見，但如此盤般造型規整，釉色俱佳者則較難得。

相關例子可參考康蕊君編，《玫茵堂中國陶瓷》，卷一，倫敦，1994-2010，編號 542。





2827

**A VERY RARE YAOZHOU
FLORAL-FORM STEM CUP
AND CUP STAND**

FIVE DYNASTIES-NORTHERN SONG DYNASTY
(907-1127)

The cup is potted with lobed sides rising to the rim of conforming form. The cup stand with a raised centre encircled by moulded lotus petals.

Cup stand: 5 7/8 in. (15 cm.) diam.,
Japanese wood box

(2)

HK\$ 150,000-250,000

US\$ 20,000-32,000

PROVENANCE

A Japanese private collection

**五代／北宋
耀州窯淡青釉青瓷（東窯）蓋及托**

來源

日本私人珍藏

此類耀州窯淡青釉青瓷傳世數量稀少，如此原套的蓋及托更屬難求。相關出土例證多見於國內博物館收藏，上世紀中後期對這類釉色青中汎藍的青釉器來歷眾說紛紛，一說是五代柴窯，一說是汝窯前身，另一說為耀州官用青瓷，早年國內及日本專家則稱之為「東窯」。近世在較多出土資料支持下，此類淡青釉青瓷的身份較為明確，可歸納為五代晚期至北宋早期耀州窯淡青瓷。

五代黃堡窯址曾出土與此拍品外形相同的淡青瓷盃托的殘片，現藏於陝西省銅川市耀州窯博物館，可參考Nigel Wood編《Chinese Glazes》，倫敦，2011年，頁112。

另於河北省平泉縣小吉溝遼墓中亦發現器形相近的例子，刊於日本常盤山文庫中國陶磁研究會會報5《青磁（東窯）》。



2828

A FINE LARGE MOULDED YAOZHOU 'PEONY' BOWL

NORTHERN SONG DYNASTY (960-1127)

The bowl is moulded on the interior with six peonies growing from scrolling and entwined branches. It is carved to the exterior with vertical lines representing overlapping petals, covered overall with a sea-green glaze with the exception of the foot ring.

7 in. (17.6 cm.) diam., box

HK\$240,000-300,000

US\$31,000-39,000

EXHIBITED

University Museum and Art Gallery, The University of Hong Kong, *The Multiplicity of Simplicity - Monochrome wares from the Song to the Yuan dynasties*, 2012, no. 35

北宋 耀州窯印花纏枝牡丹紋盃

展覽

香港大學美術博物館，《大繁若簡－宋金元朝的單色釉瓷》，2012年，圖版35號

此盃釉光亮麗，印紋清晰，乃宋代耀州窯印花盃上乘之作。

相關例子可參考康蕊君編《玫茵堂中國陶瓷》，卷1，倫敦，1994-2010年，圖431；及《日本出光美術館藏品圖錄：中國陶磁》，東京，1986年，圖93。





2829

A VERY RARE YAOZHOU BLACK-GLAZED CYLINDRICAL VASE

NORTHERN SONG DYNASTY (960-1127)

The vase is sturdily potted with a straight cylindrical body rising from a slightly splayed foot, towards a small lipped mouth. It is covered overall in a glaze of brownish-black tone, except for the base and foot.

9 $\frac{5}{8}$ in. (24.4 cm.) high, Japanese wood box

HK\$240,000-300,000

US\$31,000-39,000

PROVENANCE

A Japanese private collection, acquired in the 1990s

EXHIBITED

University Museum and Art Gallery, The University of Hong Kong, *The Multiplicity of Simplicity - Monochrome wares from the Song to the Yuan dynasties*, 2012, no. 45

北宋 耀州窯黑釉筒式瓶

來源

日本私人珍藏，入藏於1990年代

展覽

香港大學美術博物館，《大繁若簡－宋金元朝的單色釉瓷》，2012年，圖版45號

此黑釉筒式瓶十分罕見，在已發表關於宋代瓷器的資料中暫未見同例，但從器型、胎土密度，及瓶身撇腳等特徵，極有可能為北宋耀州窯場所產之物。其形態獨特，烏黑釉色陪襯簡素外形，淡雅樸實，似是文人花器。北宋時期耀州窯除主要生產青瓷之外，亦生產少量柿釉及黑釉瓷器。

與此瓶外型相近的耀州青瓷筒式瓶，可參考日本大和文華館藏一件北宋耀州青瓷刻蓮紋瓶，及中國陝西省耀州窯博物館藏一件耀州青瓷刻牡丹紋瓶，著錄於大阪市立東洋陶磁美術館編《耀州窯：中国中原に華ひらいた名窯》，大阪，1998年，頁66、67





2830

A RARE YAOZHOU FLORAL-FORM BOWL

FIVE DYNASTIES-NORTHERN SONG DYNASTY
(907-1127)

The bowl is thinly potted with scalloped sides rising to a foliate rim, covered inside and out with a finely crackled glaze of a subtle green tone.

5¼ in. (13.3 cm.) diam., box

HK\$240,000-300,000

US\$31,000-39,000

PROVENANCE

An important Hong Kong family collection, acquired in the 1980s

EXHIBITED

University Museum and Art Gallery, The University of Hong Kong, *The Multiplicity of Simplicity - Monochrome wares from the Song to the Yuan dynasties*, 2012, no. 39

A closely related floral-form bowl of similar size is illustrated in *Beauty & Entirety - Ceramics of the Song Dynasty from The Palace Museum*, Museum of Art in Macau, 2012, plate no. 99.

五代／北宋

耀州窯淡青釉（東窯）蕊心花形盤

來源

重要香港家族珍藏，入藏於1980年代

展覽

香港大學美術博物館，《大繁若簡－宋金元朝的單色釉瓷》，2012年，圖版39號

此盤胎體緻密，器壁輕薄，線條優美，五條起線出筋凌厲，乃耀州窯早期製品。

北京故宮博物院藏有一外形相同的北宋耀州窯花形盤，刊於《玉貌清明：故宮珍藏兩宋瓷器精品集》，澳門，2012年，展品99號；另一相同例子見於康蕊君編《玫茵堂中國陶瓷》，倫敦，1994-2010，編號1475。







2831

**A JIZHOU LEAF-
DECORATED CONICAL
TEA BOWL**

SOUTHERN SONG DYNASTY (1127-1279)

The bowl is delicately potted with wide flared sides. The interior is decorated near the centre with the gossamer imprint of a brownish-buff leaf against a dark-brown glaze that thins to an amber colour at the rim and ends above the shallow ring foot exposing the buff body.

6⅞ in. (15.5 cm.) diam., Japanese wood box

HK\$300,000-400,000

US\$39,000-52,000

PROVENANCE

John Sparks, London (according to label)
A Japanese private collection, acquired in
the 1990s

EXHIBITED

University Museum and Art Gallery, The
University of Hong Kong, *The Multiplicity
of Simplicity - Monochrome wares from the
Song to the Yuan dynasties*, 2012, no. 112

The conical bowl form, such as on the
current 'leaf' bowl is the most revered
form of Jizhou 'leaf' bowls. A similar Jizhou
'leaf' bowl, classified as Important Cultural
Property, in The Museum of Oriental
Ceramics, Osaka, is illustrated by Asahi
Shimbun, *Song Ceramics*, Tokyo, 1999,
p. 117, no. 79. Another bowl of this type in
the National Palace Museum collection
is illustrated in *Songci tezhhan mulu*
(Illustrated Catalogue of Song Ceramics),
Taipei, 1978, p. 50, no. 20.

南宋 吉州窯木葉盃

來源

John Sparks，倫敦，根據標籤
日本私人珍藏，入藏於1990年代

展覽

香港大學美術博物館，《大繁若簡－宋金元朝
的單色釉瓷》，2012年，圖版112號

此盃貴於葉形工整，脈絡清晰，葉與盃間的大
小比例匹配，為吉州木葉天目上乘之作。

可參考一件被日本定為「重要文化財」的木葉
天目茶盃，現藏大阪市立東洋陶磁美術館，
刊於《東洋陶磁の展開》，大阪，1990年，
頁40。





2832

**A RARE YULINTING GILT-
DECORATED BLACK-
GLAZED TEA BOWL**

SOUTHERN SONG DYNASTY (1127-1279)

The interior is decorated in gilt with cartouches enclosing the characters 'shoushan fuhai', 'mountain of longevity and sea of fortune' against a ground of delicate lines above a florette in the centre.

4 $\frac{7}{8}$ in. (12.5 cm.) diam., box

HK\$200,000-400,000

US\$26,000-52,000

EXHIBITED

University Museum and Art Gallery, The University of Hong Kong, *The Multiplicity of Simplicity - Monochrome wares from the Song to the Yuan dynasties*, 2012, no. 109

南宋 遇林亭窯黑釉金彩壽山福海盃

展覽

香港大學美術博物館，《大繁若簡－宋金元朝的單色釉瓷》，2012年，圖版109號

有一件相關的黑釉金彩文字盃近例，被日本定為「重要美術品」，出版於小山富士夫編，《陶磁大系—38—天目》，東京，1974年，圖28、29；及《龍泉集芳—1》，東京，1976年，頁222。



2833

**A RARE JIAN 'OIL SPOT'
BLACK-GLAZED TEA BOWL**

SOUTHERN SONG DYNASTY (1127-1279)

The Jian bowl is potted with deep sides rising to an indented rim, covered inside and out with a lustrous dark brown glaze suffused with russet 'oil spots'. The glaze ends irregularly around the foot exposing the stoneware body. 5 in. (12.7 cm.) diam., Japanese wood box

HK\$200,000-300,000

US\$26,000-39,000

PROVENANCE

A Japanese private collection, acquired in the 1990s

The current bowl has a very attractive black glaze with silver and brown streaks. The formation of patterns on Jian ware bowls depends on the specific oxides of iron that form in firing and to the type of crystals that develop as the glaze cools. The current bowl's appearance is somewhere between 'silver hare's fur' and 'oil spots', and is a rare occurrence. Compare to an 'oil spot' example in the Seikado Bunko Museum, Tokyo, illustrated in *Seika Toji Zenshu - Song*, Vol. 12, 1997, Tokyo, pl. 251-2, p. 254. Compare also to the example with an indented mouth rim illustrated in *ibid*, pls. 94-5, pp. 100-101. A 'silver hare's fur' example in the Metropolitan Museum of Art is illustrated by Robert D. Mowry in *Hare's Fur, Tortoiseshell, and Partridge Feathers*, Harvard University Art Museums, Cambridge, 1995, no. 83, p. 220.

南宋 建窯黑釉油滴銀斑紋盃

來源

日本私人珍藏，入藏於1990年代

此盃外形工整，釉色烏黑，斑紋微汎銀光。銀斑茶盃在建窯天目茶器中甚為少見。





2834

A JIZHOU 'PHOENIX AND PRUNUS' PAPER-CUT RESIST-DECORATED TEA BOWL

SOUTHERN SONG DYNASTY (1127-1279)

The bowl is covered on the exterior with a tortoise-shell glaze and the interior with a light speckled glaze reserve-decorated with two phoenixes in flight beside three prunus blossoms.

5 in. (12.8 cm.) diam., box

HK\$ 150,000-200,000

US\$20,000-26,000

EXHIBITED

University Museum and Art Gallery, The University of Hong Kong, *The Multiplicity of Simplicity - Monochrome wares from the Song to the Yuan dynasties*, 2012, no. 106

南宋 吉州窯剪紙貼鳳梅紋盞

展覽

香港大學美術博物館，《大繁若簡－宋金元朝的單色釉瓷》，2012年，圖版106號





2835

A JIZHOU 'TORTOISE SHELL'-GLAZED TEA BOWL

SOUTHERN SONG DYNASTY (1127-1279)

The bowl has flared sides and is covered inside and out with a dark brown glaze splashed in amber tones reminiscent of tortoise shell, stopping just above the foot.

5 $\frac{7}{8}$ in. (15 cm.) diam., box

HK\$ 150,000-300,000

US\$ 20,000-39,000

EXHIBITED

University Museum and Art Gallery, The University of Hong Kong, *The Multiplicity of Simplicity - Monochrome wares from the Song to the Yuan dynasties*, 2012, no. 105

The remarkable glaze seen on this bowl was an innovation of the pioneering potters at the Jizhou kilns in Jiangxi province. Known as 'tortoiseshell' glaze, its name was derived supposedly from its similarity to the shell of a warm-water sea turtle known as the hawksbill. Compare to a 'tortoiseshell'-glazed conical bowl from the Charles B. Hoyt Collection, and now in the Museum of Fine Arts, Boston, illustrated in *Oriental Ceramics, The World's Great Collections*, vol. 10, Tokyo, 1980, no. 172.

南宋 吉州窯玳瑁斑斗笠盃

展覽

香港大學美術博物館，《大繁若簡－宋金元朝的單色釉瓷》，2012年，圖版105號

相近例子可參考小山富士夫編《陶磁大系—38—天目》，東京，1974年，圖101、102。





2836

A CARVED DING LOTUS-FORM BOWL AND COVER

NORTHERN SONG DYNASTY (960-1127)

The domed cover with a broad rim is moulded as a lotus leaf surmounted by a stalk-form finial. The bowl is carved with vertical ribs simulating petals. Both the cover and bowl are applied to the exterior with a transparent glaze of ivory tone.

3 3/8 in. (8.1 cm.) diam., box

HK\$ 120,000–180,000

US\$ 16,000–23,000

PROVENANCE

An old Hong Kong family collection

EXHIBITED

University Museum and Art Gallery, The University of Hong Kong, *The Multiplicity of Simplicity - Monochrome wares from the Song to the Yuan dynasties*, 2012, no. 29

Two Ding bowls and covers of this form are illustrated by Regina Krahl, *Chinese Ceramics from the Meiyintang Collection*, London, 1994, Vol. 1, nos. 350 and 351. Another comparable example is a Ding censer which is also carved to the exterior with vertical lines and illustrated in *Beauty & Entirety - Ceramics of the Song Dynasty from The Palace Museum*, Museum of Art in Macau, 2012, plate no. 43.

北宋 定窯剔刻紋蓋盤

來源

香港家族珍藏

展覽

香港大學美術博物館，《大繁若簡 - 宋金元朝的單色釉瓷》，2012年，圖版 29 號

定窯瓷器中以剔刻直條紋作裝飾的器物較為少見。北京故宮博物院藏有一定窯白釉香爐，其爐身同樣是以剔刻條紋修飾，可與此拍品作對比參考，刊於《玉貌清明：故宮珍藏兩宋瓷器精品集》，澳門，2012年，圖 43。

另一外形相近的定窯直口小蓋盤可見於康蕊君編《玫茵堂中國陶瓷》，倫敦，1994–2010年，卷1，編號 350，351。



2837

A DING 'LOTUS POND' PILLOW

NORTHERN SONG DYNASTY (960-1127)

The top is fluidly carved with lotus blossoms and leaves, all reserved against a combed wave ground within a double-line border. The sides are decorated with overlapping waves partially filled with a combed motif. It is covered with a creamy glaze of slightly yellowish tone.

10¾ in. (27.5 cm.) long, box

HK\$150,000-250,000

US\$20,000-32,000

EXHIBITED

University Museum and Art Gallery, The University of Hong Kong, *The Multiplicity of Simplicity - Monochrome wares from the Song to the Yuan dynasties*, 2012, no. 34

A Ding pillow of similar form with incised decoration is illustrated in *Beauty & Entirety - Ceramics of the Song Dynasty from The Palace Museum*, Museum of Art in Macau, 2012, plate no. 48.

北宋 定窯刻花水波蓮紋枕

展覽

香港大學美術博物館，《大繁若簡－宋金元朝的單色釉瓷》，2012年，圖版34號

定窯瓷枕傳世數量甚少，如此枕般體形碩大的更為難得。

北京故宮博物院藏有大小及器形相若的定窯剔花瓷枕，見於《玉貌清明：故宮珍藏兩宋瓷器精品集》，澳門，2012年，圖48。另一體形略小的定窯褐彩瓷枕展出於大阪市立東洋陶磁美術館《宋磁之美》，大阪，2016年，圖22。



2838

A VERY RARE DING VASE

NORTHERN SONG DYNASTY (960-1127)

The vase is potted with a slightly compressed globular body between a pair of raised flanges rising from a recessed foot to a ribbed mouth. It is covered overall with a clear ivory-white glaze of even tone, with the exception of the unglazed foot exposing the white biscuit body.

5¼ in. (13 cm.) high, box

HK\$240,000-300,000

US\$31,000-39,000

PROVENANCE

An important Hong Kong family collection, acquired in the 1970s

A *Guan* flower vase dated to the Southern Song dynasty of similar form, also decorated with raised flanges around the body is illustrated in *Precious as the Morning Star: 12th-14th Century Celadons in the Qing Court Collection*, National Palace Museum, Taipei, 2016, p. 162. A Yaozhou flower vase of similar rounded form is illustrated in *Museum of Oriental Ceramics, Osaka, Yoshuyo/The Masterpieces of Yaozhou Ware*, Osaka, 1997, p. 57

北宋 定窯白瓷花插

來源

重要香港家族珍藏，入藏於1970年代

此花插外型奇特十分罕見，在已發表的定窯資料中暫時只見此例，其白釉微泛藍光應為北宋早期定州所製。

與其外形近似的例子，可參考台北故宮博物院藏南宋官窯三弦紋青瓷花插，其圓筒外形及器身上的三道弦紋與此花插十分相似，或有承先啓後的關係，見於《真似晨星：清宮傳世12至14世紀青瓷特展》，台北，2016年，頁162。

另一北宋青瓷筒形花插，其外形及比例與此花插亦很類似，見於大阪市立東洋陶磁美術館編《中国中原に華ひらいた名窯-耀州窯展》，大阪，1998年，頁57。





2839

A FINE AND RARE DING MOULDED 'PEONY' FOLIATE-RIM BOWL

NORTHERN SONG DYNASTY (960-1127)

The mouth rim is gently indented to form six lobes. The interior is moulded in the centre with a peony surrounded by a further four peony blossoms borne on entwining scrolls decorated on the cavetto. The bowl is covered overall in a glaze of creamy ivory tone, the rim is bound in metal.

7½ in. (19 cm.) diam., box

HK\$700,000-900,000

US\$91,000-120,000

EXHIBITED

University Museum and Art Gallery, The University of Hong Kong, *The Multiplicity of Simplicity - Monochrome wares from the Song to the Yuan dynasties*, 2012, no. 28

Compare to another Ding bowl moulded with this decoration, possibly from the same mould, on display at the Guimet Museum, no. MA4163.

北宋 定窯印花牡丹紋盃

展覽

香港大學美術博物館，《大繁若簡－宋金元朝的單色釉瓷展出》，2012年，圖版28號

此盃印紋清晰，釉色亮麗，品相完美，在已知的相關資料中只發現另一相同例子，藏於法國巴黎吉美博物館，屬館藏定窯常設展品之一，藏品編號MA4163。









2840

A FINE AND RARE LARGE DING INCISED 'PEONY' LOBED BOWL

NORTHERN SONG DYNASTY (960-1127)

The interior is freely incised with a peony blossom borne on leafy stems, and the bowl is covered inside and out with a smooth white glaze. The mouth rim is mounted with a metal band.

9¾ in. (25 cm.) diam., Japanese wood box

HK\$ 1,200,000-1,800,000

US\$160,000-230,000

PROVENANCE

An important Hong Kong family collection

EXHIBITED

University Museum and Art Gallery, The University of Hong Kong, *The Multiplicity of Simplicity - Monochrome wares from the Song to the Yuan dynasties*, 2012, no. 25

A Ding bowl of similar form and incised decoration is in the National Palace Museum, Taipei, and illustrated by Tsai Meifen, *Decorated Porcelains of Dingzhou: White Ding Wares from the Collection of the National Palace Museum*, Taipei, 2014, p. 75. Another closely related dish with similar carved peony decoration is in the Grandier Collection in the Musée Guimet, Paris illustrated in *Oriental Ceramics, The World's Great Collections, Vol. 7 - Musée Guimet*, Paris, 1981, no. 28.

北宋 定窯劃花牡丹紋葵口大盤

來源

重要香港家族珍藏

展覽

香港大學美術博物館，《大繁若簡－宋金元朝的單色釉瓷》，2012年，圖版25號

此盤釉質白潤，胎體輕薄，盤內刻劃一折枝盛放單朵牡丹，全器紋飾以線狀直刀淺刻，並以齒狀邊緣修飾花葉，其刻劃風格與常見的定窯花瓷以斜刀切出陰影面的雕刻技法有別。以直刀淺刻裝飾的定窯瓷器，傳世數量較少。

台北故宮博物院藏有一近似的定窯刻花牡丹紋大盤，著錄於《定州花瓷：院藏定窯系白瓷特展》，國立故宮博物院，2014年，頁75。

法國巴黎吉美博物館藏有兩件定窯劃花牡丹盛碟，其中一件體型略小的定窯劃花牡丹淺盤著錄於《Oriental Ceramics, The World Great Collections - Vol. 8, Musée Guimet》，巴黎，1976年，黑白圖28；另一件與本拍品外形及刻花一致的牡丹大盤則為館藏常設展品。





CONDITIONS OF SALE • BUYING AT CHRISTIE'S

CONDITIONS OF SALE

These Conditions of Sale and the Important Notices and Explanation of Cataloguing Practice set out the terms on which we offer the **lots** listed in this catalogue for sale. By registering to bid and/or by bidding at auction you agree to these terms, so you should read them carefully before doing so. You will find a glossary at the end explaining the meaning of the words and expressions coloured in **bold**.

Unless we own a **lot** (Δ symbol), Christie's acts as agent for the seller.

A BEFORE THE SALE

1 DESCRIPTION OF LOTS

(a) Certain words used in the catalogue description have special meanings. You can find details of these on the page headed "Important Notices and Explanation of Cataloguing Practice" which forms part of these terms. You can find a key to the Symbols found next to certain catalogue entries under the section of the catalogue called "Symbols Used in this Catalogue".

(b) Our description of any **lot** in the catalogue, any **condition** report and any other statement made by us (whether orally or in writing) about any **lot**, including about its nature or **condition**, artist, period, materials, approximate dimensions or **provenance** are our opinion and not to be relied upon as a statement of fact. We do not carry out in-depth research of the sort carried out by professional historians and scholars. All dimensions and weights are approximate only.

2 OUR RESPONSIBILITY FOR OUR DESCRIPTION OF LOTS

We do not provide any guarantee in relation to the nature of a **lot** apart from our **authenticity warranty** contained in paragraph E2 and to the extent provided in paragraph I below.

3 CONDITION

(a) The **condition** of **lots** sold in our auctions can vary widely due to factors such as age, previous damage, restoration, repair and wear and tear. Their nature means that they rarely be in perfect **condition**. **Lots** are sold "as is" in the **condition** they are in at the time of the sale, without any representation or warranty or assumption of liability of any kind as to **condition** by Christie's or by the seller.

(b) Any reference to **condition** in a catalogue entry or in a **condition** report will not amount to a full description of **condition**, and images may not show a **lot** clearly. Colours and shades may look different in print or on screen to how they look on physical inspection. **Condition** reports may be available to help you evaluate the **condition** of a **lot**. **Condition** reports are provided free of charge as a convenience to our buyers and are for guidance only. They offer our opinion but they may not refer to all faults, inherent defects, restoration, alteration or adaptation because our staff are not professional restorers or conservators. For that reason they are not an alternative to examining a **lot** in person or taking your own professional advice. It is your responsibility to ensure that you have requested, received and considered any **condition** report.

4 VIEWING LOTS PRE-AUCTION

(a) If you are planning to bid on a **lot**, you should inspect it personally or through a knowledgeable representative before you make a bid to make sure that you accept the description and its **condition**. We recommend you get your own advice from a restorer or other professional adviser.

(b) Pre-auction viewings are open to the public free of charge. Our specialists may be available to answer questions at pre-auction viewings or by appointment.

5 ESTIMATES

Estimates are based on the **condition**, rarity, quality and **provenance** of the **lots** and on prices recently paid at auction for similar property. **Estimates** can change. Neither you, nor anyone else, may rely on any **estimates** as a prediction or guarantee of the actual selling price of a **lot** or its value for any other purpose. **Estimates** do not include the **buyer's premium** or any applicable taxes. **Estimates** may be shown in different currencies from that of the

saleroom for guidance only. The rate of exchange used in our printed catalogues is fixed at the latest practical date prior to the printing of the catalogue and may have changed by the time of our sale.

6 WITHDRAWAL

Christie's may, at its option, withdraw any **lot** at any time prior to or during the sale of the **lot**. Christie's has no liability to you for any decision to withdraw.

7 JEWELLERY

(a) Coloured gemstones (such as rubies, sapphires and emeralds) may have been treated to improve their look, through methods such as heating and oiling. These methods are accepted by the international jewellery trade but may make the gemstone less strong and/or require special care over time.

(b) All types of gemstones may have been improved by some method. You may request a gemmological report for any item which does not have a report if the request is made to us at least three weeks before the date of the auction and you pay the fee for the report.

(c) We do not obtain a gemmological report for every gemstone sold in our auctions. Where we do get gemmological reports from internationally accepted gemmological laboratories, such reports will be described in the catalogue. Reports from American gemmological laboratories will describe any improvement or treatment to the gemstone. Reports from European gemmological laboratories will describe any improvement or treatment only if we request that they do so, but will confirm when no improvement or treatment has been made. Because of differences in approach and technology, laboratories may not agree whether a particular gemstone has been treated, the amount of treatment or whether treatment is permanent. The gemmological laboratories will only report on the improvements or treatments known to the laboratories at the date of the report.

(d) For jewellery sales, **estimates** are based on the information in any gemmological report or, if no report is available, assume that the gemstones may have been treated or enhanced.

8 WATCHES & CLOCKS

(a) Almost all clocks and watches are repaired in their lifetime and may include parts which are not original. We do not give a **warranty** that any individual component part of any watch or clock is **authentic**. Watchbands described as "associated" are not part of the original watch and may not be **authentic**. Clocks may be sold without pendulums, weights or keys.

(b) As collectors' watches and clocks often have very fine and complex mechanisms, a general service, change of battery or further repair work may be necessary, for which you are responsible. We do not give a **warranty** that any watch or clock is in good working order. Certificates are not available unless described in the catalogue.

(c) Most watches have been opened to find out the type and quality of movement. For that reason, watches with water resistant cases may not be waterproof and we recommend you have them checked by a competent watchmaker before use. Important information about the sale, transport and shipping of watches and watchbands can be found in paragraph H2(f).

B REGISTERING TO BID

1 NEW BIDDERS

(a) If this is your first time bidding at Christie's or you are a returning bidder who has not bought anything from any of our salerooms within the last two years you must register at least 48 hours before an auction to give us enough time to process and approve your registration. We may, at our option, decline to permit you to register as a bidder. You will be asked for the following:

(i) for individuals: Photo identification (driving licence, national identity card or passport) and, if not shown on the ID document, proof of your current address (for example, a current utility bill or bank statement);

(ii) for corporate clients: Your Certificate of Incorporation or equivalent document(s) showing your name and registered address, photo ID copy of the authorized bidder, letter of authorization duly

signed by legal representative and, where applicable, chopped with company stamp and together with documentary proof of directors and beneficial owners; (iii) for trusts, partnerships, offshore companies and other business structures, please contact us in advance to discuss our requirements.

(b) We may also ask you to give us a financial reference and/or a deposit as a condition of allowing you to bid. For help, please contact our Client Services Department on +852 2760 1766.

2 RETURNING BIDDERS

We may at our option ask you for current identification as described in paragraph B1(a) above, a financial reference or a deposit as a condition of allowing you to bid. If you have not bought anything from any of our salerooms in the last two years or if you want to spend more than on previous occasions, please contact our Bids Department on +852 2978 9910 or email to bidsasia@christies.com.

3 IF YOU FAIL TO PROVIDE THE RIGHT DOCUMENTS

If in our opinion you do not satisfy our bidder identification and registration procedures including, but not limited to completing any anti-money laundering and/or anti-terrorism financing checks we may require to our satisfaction, we may refuse to register you to bid, and if you make a successful bid, we may cancel the contract for sale between you and the seller. Christie's may, at its option, specify the type of photo identification it will accept, for the purposes of bidder identification and registration procedures.

4 BIDDING ON BEHALF OF ANOTHER PERSON

(a) **As authorised bidder:** If you are bidding on behalf of another person, that person will need to complete the registration requirements above before you can bid, and supply a signed letter authorising you to bid for him/her.

(b) **As agent for an undisclosed principal:** If you are bidding as an agent for an undisclosed principal (the ultimate buyer(s)), you accept personal liability to pay the **purchase price** and all other sums due. Further, you warrant that:

(i) you have conducted appropriate customer due diligence on the ultimate buyer(s) of the **lot(s)** in accordance with any and all applicable anti-money laundering and sanctions laws, consent to us relying on this due diligence, and you will retain for a period of not less than 5 years the documentation and records evidencing the due diligence;

(ii) you will make such documentation and records evidencing your due diligence promptly available for immediate inspection by an independent third-party auditor upon our written request to do so. We will not disclose such documentation and records to any third-parties unless (1) it is already in the public domain, (2) it is required to be disclosed by law, or (3) it is in accordance with anti-money laundering laws;

(iii) the arrangements between you and the ultimate buyer(s) are not designed to facilitate tax crimes;

(iv) you do not know, and have no reason to suspect, that the funds used for settlement are connected with, the proceeds of any criminal activity or that the ultimate buyer(s) are under investigation, charged with or convicted of money laundering, terrorist activities or other money laundering predicate crimes. A bidder accepts personal liability to pay the **purchase price** and all other sums due unless it has been agreed in writing with Christie's before commencement of the auction that the bidder is acting as an agent on behalf of a named third party acceptable to Christie's and that Christie's will only seek payment from the named third party.

5 BIDDING IN PERSON

If you wish to bid in the saleroom you must register for a numbered bidding paddle at least 30 minutes before the auction. For help, please contact the Client Services Department on +852 2760 1766.

6 BIDDING SERVICES

The bidding services described below are a free service offered as a convenience to our clients and Christie's is not responsible for any error (human or otherwise), omission or breakdown in providing these services.

(A) PHONE BIDS

Your request for this service must be made no later than 24 hours prior to the auction. We will accept bids by telephone for **lots** only if our staff are available to take the bids. Telephone bids cannot be accepted for lots estimated below HK\$30,000. If you need to bid in a language other than in English, you must arrange this well before the auction. We may record telephone bids. By bidding on the telephone, you are agreeing to us recording your conversations. You also agree that your telephone bids are governed by these Conditions of Sale.

(B) INTERNET BIDS ON CHRISTIE'S LIVE™

For certain auctions we will accept bids over the Internet. Please visit www.christies.com/livebidding and click on the 'Bid Live' icon to see details of how to watch, hear and bid at the auction from your computer. As well as these Conditions of Sale, internet bids are governed by the Christie's LIVE™ terms of use which are available on <https://www.christies.com/LiveBidding/OnlineTermsOfUse.aspx>.

(C) WRITTEN BIDS

You can find a Written Bid Form at the back of our catalogues, at any Christie's office or by choosing the sale and viewing the **lots** online at www.christies.com. We must receive your completed Written Bid Form at least 24 hours before the auction. Bids must be placed in the currency of the saleroom. The **auctioneer** will take reasonable steps to carry out written bids at the lowest possible price, taking into account the **reserve**. If you make a written bid on a **lot** which does not have a **reserve** and there is no higher bid than yours, we will bid on your behalf at around 50% of the **low estimate** or, if lower, the amount of your bid. If we receive written bids on a **lot** for identical amounts, and at the auction these are the highest bids on the **lot**, we will sell the **lot** to the bidder whose written bid we received first.

C CONDUCTING THE SALE

1 WHO CAN ENTER THE AUCTION

We may, at our option, refuse admission to our premises or decline to permit participation in any auction or to reject any bid.

2 RESERVES

Unless otherwise indicated, all **lots** are subject to a **reserve**. We identify **lots** that are offered without **reserve** with the symbol **·** next to the **lot** number. The **reserve** cannot be more than the **lot's low estimate**.

3 AUCTIONEER'S DISCRETION

The **auctioneer** can at his sole option:

- refuse any bid;
- move the bidding backwards or forwards in any way he or she may decide, or change the order of the **lots**;
- withdraw any **lot**;
- divide any **lot** or combine any two or more **lots**;
- reopen or continue the bidding even after the hammer has fallen; and
- in the case of error or dispute related to bidding and whether during or after the auction, continue the bidding, determine the successful bidder, cancel the sale of the **lot**, or reoffer and resell any **lot**. If you believe that the **auctioneer** has accepted the successful bid in error, you must provide a written notice detailing your claim within 3 business days of the date of the auction. The **auctioneer** will consider such claim in good faith. If the **auctioneer**, in the exercise of his or her discretion under this paragraph, decides after the auction is complete, to cancel the sale of a **lot**, or reoffer and resell a **lot**, he or she will notify the successful bidder no later than by the end of the 7th calendar day following the date of the auction. The **auctioneer's** decision in exercise of this discretion is final. This paragraph does not in any way prejudice Christie's ability to cancel the sale of a **lot** under any other applicable provision of these Conditions of Sale, including the rights of cancellation set forth in sections B(3), E(2)(i), F(4) and J(1).

4 BIDDING

The **auctioneer** accepts bids from:

- bidders in the saleroom;
- telephone bidders, and internet bidders through 'Christie's LIVE™' (as shown above in Section B6); and
- written bids (also known as absentee bids or commission bids) left with us by a bidder before the auction.

5 BIDDING ON BEHALF OF THE SELLER

The **auctioneer** may, at his or her sole option, bid on behalf of the seller up to but not including the amount of the **reserve** either by making consecutive bids or by making bids in response to other bidders. The **auctioneer** will not identify these as bids made on

behalf of the seller and will not make any bid on behalf of the seller at or above the **reserve**. If **lots** are offered without **reserve**, the **auctioneer** will generally decide to open the bidding at 50% of the **low estimate** for the **lot**. If no bid is made at that level, the **auctioneer** may decide to go backwards at his or her sole option until a bid is made, and then continue up from that amount. In the event that there are no bids on a **lot**, the **auctioneer** may deem such **lot** unsold.

6 BID INCREMENTS

Bidding generally starts below the **low estimate** and increases in steps (bid increments). The **auctioneer** will decide at his or her sole option where the bidding should start and the bid increments. The usual bid increments are shown for guidance only on the Written Bid Form at the back of this catalogue.

7 CURRENCY CONVERTER

The saleroom video screens, Christie's LIVE™ and Christie's website may show bids in some other major currencies from that of the saleroom. Any conversion is for guidance only and we cannot be bound by any rate of exchange used by Christie's. Christie's is not responsible for any error (human or otherwise), omission or breakdown in providing these services.

8 SUCCESSFUL BIDS

Unless the **auctioneer** decides to use his or her discretion as set out in paragraph C3 above, when the **auctioneer's** hammer strikes, we have accepted the last bid. This means a contract for sale has been formed between the seller and the successful bidder. We will issue an invoice only to the registered bidder who made the successful bid. While we send out invoices by post and/or email after the auction, we do not accept responsibility for telling you whether or not your bid was successful. If you have bid by written bid, you should contact us by telephone or in person as soon as possible after the auction to get details of the outcome of your bid to avoid having to pay unnecessary storage charges.

9 LOCAL BIDDING LAWS

You agree that when bidding in any of our sales that you will strictly comply with all local laws and regulations in force at the time of the sale for the relevant sale site.

D THE BUYER'S PREMIUM, TAXES

1 THE BUYER'S PREMIUM

In addition to the **hammer price**, the successful bidder agrees to pay us a **buyer's premium** on the **hammer price** of each **lot** sold. On all **lots** we charge 25% of the **hammer price** up to and including HK\$5,000,000, 20% on that part of the **hammer price** over HK\$5,000,000 and up to and including HK\$50,000,000, and 14.5% of that part of the **hammer price** above HK\$50,000,000.

2 TAXES

The successful bidder is responsible for any applicable tax including any VAT, sales or compensating use tax or equivalent tax wherever such taxes may arise on the **hammer price** and the **buyer's premium**. It is the buyer's responsibility to ascertain and pay all taxes due. In all circumstances Hong Kong law takes precedence. Christie's recommends you obtain your own independent tax advice.

For **lots** Christie's ships to the United States, a state sales or use tax may be due on the **hammer price**, **buyer's premium** and/or any other charges related to the **lot**, regardless of the nationality or citizenship of the purchaser. Christie's will collect sales tax where legally required. The applicable sales tax rate will be determined based upon the state, county, or locale to which the **lot** will be shipped. Successful bidders claiming an exemption from sales tax must provide appropriate documentation to Christie's prior to the release of the **lot**. For shipments to those states for which Christie's is not required to collect sales tax, a successful bidder may be required to remit use tax to that state's taxing authorities. Christie's recommends you obtain your own independent tax advice with further questions.

E WARRANTIES

1 SELLER'S WARRANTIES

For each **lot**, the seller gives a **warranty** that the seller: (a) is the owner of the **lot** or a joint owner of the **lot** acting with the permission of the other co-owners or, if the seller is not the owner or a joint owner of the **lot**, has the permission of the owner to sell the **lot**, or the right to do so in law; and (b) has the right to transfer ownership of the **lot** to the buyer without any restrictions or claims by anyone else.

If either of the above **warranties** are incorrect, the seller shall not have to pay more than the **purchase price** (as defined in paragraph F1(a) below) paid by you to us. The seller will not be responsible to you for any reason for loss of profits or business, expected savings, loss of opportunity or interest, costs, damages, **other damages** or expenses. The seller gives no **warranty** in relation to any **lot** other than as set out above and, as far as the seller is allowed by law, all **warranties** from the seller to you, and all other obligations upon the seller which may be added to this agreement by law, are excluded.

2 OUR AUTHENTICITY WARRANTY

We warrant, subject to the terms below, that the **lots** in our sales are **authentic** (our "**authenticity warranty**"). If, within 5 years of the date of the auction, you give notice to us that your **lot** is not **authentic**, subject to the terms below, we will refund the **purchase price** paid by you. The meaning of **authentic** can be found in the glossary at the end of these Conditions of Sale. The terms of the **authenticity warranty** are as follows:

(a) It will be honoured for claims notified within a period of 5 years from the date of the auction. After such time, we will not be obligated to honour the **authenticity warranty**.

(b) It is given only for information shown in **UPPERCASE type** in the first line of the **catalogue description** (the "**Heading**"). It does not apply to any information other than in the **Heading**, even if shown in **UPPERCASE type**.

(c) The **authenticity warranty** does not apply to any **Heading** or part of a **Heading** which is qualified. **Qualified** means limited by a clarification in a **lot's catalogue description** or by the use in a **Heading** of one of the terms listed in the section titled **Qualified Headings** on the page of the catalogue headed "Important Notices and Explanation of Cataloguing Practice". For example, use of the term "ATTRIBUTED TO....." in a **Heading** means that the **lot** is in Christie's opinion probably a work by the named artist but no warranty is provided that the **lot** is the work of the named artist. Please read the full list of **Qualified Headings** and a **lot's full catalogue description** before bidding.

(d) The **authenticity warranty** applies to the **Heading** as amended by any **Saleroom Notice**.

(e) The **authenticity warranty** does not apply where scholarship has developed since the auction leading to a change in generally accepted opinion. Further it does not apply if the **Heading** either matched the generally accepted opinion of experts at the date of the sale or drew attention to any conflict of opinion.

(f) The **authenticity warranty** does not apply if the **lot** can only be shown not to be **authentic** by a scientific process which, on the date we published the catalogue, was not available or generally accepted for use, or which was unreasonably expensive or impractical, or which was likely to have damaged the **lot**.

(g) The benefit of the **authenticity warranty** is only available to the original buyer shown on the invoice for the **lot** issued at the time of the sale and only if, on the date of the notice of claim, the original buyer is the full owner of the **lot** and the **lot** is free from any claim, interest or restriction by anyone else. The benefit of this **authenticity warranty** may not be transferred to anyone else.

(h) In order to claim under the **authenticity warranty** you must:

- give us written notice of your claim within 5 years of the date of the auction. We may require full details and supporting evidence of any such claim;
- at Christie's option, we may require you to provide the written opinions of two recognized experts in the field of the **lot** mutually agreed by you and us in advance confirming that the **lot** is not **authentic**. If we have any doubts, we reserve the right to obtain additional opinions at our expense; and
- return the **lot** at your expense to the saleroom from which you bought it in the **condition** it was in at the time of sale.

(i) Your only right under this **authenticity warranty** is to cancel the sale and receive a refund of the **purchase price** paid by you to us. We will not, in any circumstances, be required to pay you more than the **purchase price** nor will we be liable for any loss of profits or business, loss of opportunity or value, expected savings or interest, costs, damages, **other damages** or expenses.

(j) **Books**. Where the **lot** is a book, we give an additional **warranty** for 14 days from the date of the sale that if on collation any **lot** is defective in text or illustration, we will refund your **purchase price**, subject to the following terms:

- (a) This additional **warranty** does not apply to:
- (i) the absence of blanks, half titles, tissue guards or advertisements, damage in respect of bindings, stains, spotting, marginal tears or other defects not affecting completeness of the text or illustration;
 - (ii) drawings, autographs, letters or manuscripts, signed photographs, music, atlases, maps or periodicals;
 - (iii) books not identified by title;
 - (iv) **lots** sold without a printed **estimate**;
 - (v) books which are described in the catalogue as sold not subject to return; or
 - (vi) defects stated in any **condition** report or announced at the time of sale.
- (b) To make a claim under this paragraph you must give written details of the defect and return the **lot** to the sale room at which you bought it in the same **condition** as at the time of sale, within 14 days of the date of the sale.
- (k) **South East Asian Modern and Contemporary Art and Chinese Calligraphy and Painting.**

In these categories, the **authenticity warranty** does not apply because current scholarship does not permit the making of definitive statements. Christie's does, however, agree to cancel a sale in either of these two categories of art where it has been proven the **lot** is a forgery. Christie's will refund to the original buyer the **purchase price** in accordance with the terms of Christie's **authenticity warranty**, provided that the original buyer gives us written notice of the claim within twelve (12) months of the date of the auction. We may require full details and supporting evidence of any such claim. Such evidence must be satisfactory to us that the **lot** is a forgery in accordance with paragraph E2(h)(ii) above and the **lot** must be returned to us in accordance with E2h(iii) above. Paragraphs E2(b), (c), (d), (e), (f) and (g) and (i) also apply to a claim under these categories.

(l) Chinese, Japanese and Korean artefacts (excluding Chinese, Japanese and Korean calligraphy, paintings, prints, drawings and jewellery).

In these categories, paragraph E2 (b) - (e) above shall be amended so that where no maker or artist is identified, the authenticity warranty is given not only for the **Heading** but also for information regarding date or period shown in **UPPERCASE type** in the second line of the **catalogue description** (the "**Subheading**"). Accordingly, all references to the **Heading** in paragraph E2 (b) - (e) above shall be read as references to both the **Heading** and the **Subheading**.

F PAYMENT

1 HOW TO PAY

- (a) Immediately following the auction, you must pay the **purchase price** being:
- (i) the **hammer price**; and
 - (ii) the **buyer's premium**; and
 - (iii) any duties, goods, sales, use, compensating or service tax.
- Payment is due no later than by the end of the 7th calendar day following the date of the auction (the "**due date**").
- (b) We will only accept payment from the registered bidder. Once issued, we cannot change the buyer's name on an invoice or re-issue the invoice in a different name. You must pay immediately even if you want to export the **lot** and you need an export licence.
- (c) You must pay for **lots** bought at Christie's in Hong Kong in the currency stated on the invoice in one of the following ways:
- (i) Christie's is pleased to offer clients the option of viewing invoices, paying and arranging shipping online through MyChristie's. To log in, or if you have yet to create an online account, please go to: www.christies.com/MyChristies. While this service is available for most lots, payment and shipping must be arranged offline for some items. Please contact Post-Sale Services directly to coordinate.
 - (ii) Wire transfer

You must make payments to:

HSBC
Head Office
1 Queen's Road, Central, Hong Kong
Bank code: 004
Account No. 062-305438-001
Account Name: Christie's Hong Kong Limited
SWIFT: HSBCHKHHHKH

- (iii) Credit Card.
We accept most major credit cards subject to certain conditions. We accept payments in person by credit card up to HK\$1,000,000 per auction sale although conditions and restrictions apply. China Union Pay is accepted with no limits on amounts. To make a 'cardholder not present' (CNP) payment, we accept payment up to HK\$1,000,000 per auction sale. CNP

payments cannot be accepted by all salerooms and are subject to certain restrictions. Details of the conditions and restrictions applicable to credit card payments are available from our Post-Sale Services Department, whose details are set out in paragraph (d) below.

- (iv) Cash
We accept cash subject to a maximum of HKD 80,000 per buyer per year at our Post-Sale Services Department only (subject to conditions).
- (v) Banker's draft
You must make these payable to Christie's Hong Kong Limited and there may be conditions.
- (vi) Cheque
You must make cheques payable to Christie's Hong Kong Limited. Cheques must be from accounts in Hong Kong dollar from a Hong Kong bank.
- (d) You must quote the sale number, your invoice number and client number when making a payment. All payments sent by post must be sent to: Christie's, Post-Sale Services Department, 22nd Floor Alexandra House, 18 Chater Road, Central, Hong Kong.
- (e) For more information please contact our Post-Sale Services Department by phone on +852 2760 1766 or email to postsaleasia@christies.com.

2 TRANSFERRING OWNERSHIP TO YOU

You will not own the **lot** and ownership of the **lot** will not pass to you until we have received full and clear payment of the **purchase price**, even in circumstances where we have released the **lot** to the buyer.

3 TRANSFERRING RISK TO YOU

The risk in and responsibility for the **lot** will transfer to you from whichever is the earlier of the following:

- (a) When you collect the **lot**; or
- (b) At the end of the 30th day following the date of the auction or, if earlier, the date the **lot** is taken into care by a third party warehouse unless we have agreed otherwise with you in writing.

4 WHAT HAPPENS IF YOU DO NOT PAY

- (a) If you fail to pay us the **purchase price** in full by the **due date**, we will be entitled to do one or more of the following (as well as enforce our rights under paragraph F5 and any other rights or remedies we have by law):
 - (i) to charge interest from the **due date** at a rate of 7% a year above the 3-month HIBOR rate from time to time on the unpaid amount due;
 - (ii) we can cancel the sale of the **lot**. If we do this, we may sell the **lot** again, publicly or privately on such terms we shall think necessary or appropriate, in which case you must pay us any shortfall between the **purchase price** and the proceeds from the resale. You must also pay all costs, expenses, losses, damages and legal fees we have to pay or may suffer and any shortfall in the seller's commission on the resale;
 - (iii) we can pay the seller an amount up to the net proceeds payable in respect of the amount bid by your default in which case you acknowledge and understand that Christie's will have all of the rights of the seller to pursue you for such amounts;
 - (iv) we can hold you legally responsible for the **purchase price** and may begin legal proceedings to recover it together with other losses, interest, legal fees and costs as far as we are allowed by law;
 - (v) we can take what you owe us from any amounts which we or any company in the **Christie's Group** may owe you (including any deposit or other part-payment which you have paid to us);
 - (vi) we can, at our option, reveal your identity and contact details to the seller;
 - (vii) we can reject at any future auction any bids made by you or on your behalf or to obtain a deposit from you before accepting any bids;
 - (viii) to exercise all the rights and remedies of a person holding security over any property in our possession owned by you, whether by way of pledge, security interest or in any other way as permitted by the law of the place where such property is located. You will be deemed to have granted such security to us and we may retain such property as collateral security for your obligations to us; and
 - (ix) we can take any other action we see necessary or appropriate.
- (b) If you owe money to us or to another **Christie's Group** company, we can use any amount you do pay, including any deposit or other part-payment you have made to us, or which we owe you, to pay off any amount you owe to us or another **Christie's Group** company for any transaction.
- (c) If you make payment in full after the **due date**, and we choose to accept such payment we may charge you storage and transport costs from the date that is 31 calendar days following the auction in accordance with paragraphs G(d)(i) and (ii). In such circumstances paragraph G(d)(iv) shall apply.

5 KEEPING YOUR PROPERTY

If you owe money to us or to another **Christie's Group** company, as well as the rights set out in F4 above, we can use or deal with any of your property we hold or which is held by another **Christie's Group** company in any way we are allowed to by law. We will only release your property to you after you pay us or the relevant **Christie's Group** company in full for what you owe. However, if we choose, we can also sell your property in any way we think appropriate. We will use the proceeds of the sale against any amounts you owe us and we will pay any amount left from that sale to you. If there is a shortfall, you must pay us any difference between the amount we have received from the sale and the amount you owe us.

G COLLECTION AND STORAGE

- (a) We ask that you collect purchased lots promptly following the auction (**but note that you may not collect any lot until you have made full and clear payment of all amounts due to us**).
- (b) For information on collecting lots, Please contact Christie's Post-Sale Services Department on +852 2760 1766 / Email: postsaleasia@christies.com
- (c) If you do not collect any **lot** promptly following the auction we can, at our option, remove the **lot** to another Christie's location or an affiliate or third party warehouse.
- (d) If you do not collect a **lot** by the end of the 30th day following the date of the auction, unless otherwise agreed in writing:
 - (i) we will charge you storage costs from that date.
 - (ii) we can, at our option, move the **lot** to or within an affiliate or third party warehouse and charge you transport costs and administrative fees for doing so.
 - (iii) we may sell the **lot** in any commercially reasonable way we think appropriate.
 - (iv) the storage terms which can be found at www.christies.com/storage shall apply.
 - (v) nothing in this paragraph is intended to limit our rights under paragraph F4.

H TRANSPORT AND SHIPPING

1 TRANSPORT AND SHIPPING

We will enclose a transport and shipping form with each invoice sent to you. You must make all transport and shipping arrangements. However, we can arrange to pack, transport and ship your property if you ask us to and pay the costs of doing so. We recommend that you ask us for an **estimate**, especially for any large items or items of high value that need professional packing before you bid. We may also suggest other handlers, packers, transporters or experts if you ask us to do so. For more information, please contact Christie's Post-Sale Services Department by phone on +852 2760 1766 or email to postsaleasia@christies.com. We will take reasonable care when we are handling, packing, transporting and shipping a **lot**. However, if we recommend another company for any of these purposes, we are not responsible for their acts, failure to act or neglect.

2 EXPORT AND IMPORT

Any **lot** sold at auction may be affected by laws on exports from the country in which it is sold and the import restrictions of other countries. Many countries require a declaration of export for property leaving the country and/or an import declaration on entry of property into the country. Local laws may prevent you from importing a **lot** or may prevent you selling a **lot** in the country you import it into. We will not be obliged to cancel your purchase and refund the **purchase price** if your **lot** may not be exported, imported or it is seized for any reason by a government authority. It is your responsibility to determine and satisfy the requirements of any applicable laws or regulations relating to the export or import of any **lot** you purchase.

- (a) You alone are responsible for getting advice about and meeting the requirements of any laws or regulations which apply to exporting or importing any **lot** prior to bidding. If you are refused a licence or there is a delay in getting one, you must still pay us in full for the **lot**. We may be able to help you apply for the appropriate licences if you ask us to and pay our fee for doing so. However, we cannot guarantee that you will get one. For more information, please contact Christie's Post-Sale Services Department by phone on +852 2760 1766 or email to postsaleasia@christies.com.
- (b) You alone are responsible for any applicable taxes, tariffs or other government-imposed charges relating to the export or import of the **lot**. If Christie's exports or imports the **lot** on your behalf, and if Christie's pays these applicable taxes, tariffs or other government-imposed charges, you agree to refund that amount to Christie's.

(c) Lots made of protected species

Lots made of or including (regardless of the percentage) endangered and other protected species of wildlife are marked with the symbol **Ψ** in the catalogue. This material includes, among other things, ivory, tortoiseshell, crocodile skin, rhinoceros horn, whalebone certain species of coral, and rosewood. You should check the relevant customs laws and regulations before bidding on any **lot** containing wildlife material if you plan to import the **lot** into another country. Several countries refuse to allow you to import property containing these materials, and some other countries require a licence from the relevant regulatory agencies in the countries of exportation as well as importation. In some cases, the **lot** can only be shipped with an independent scientific confirmation of species and/or age and you will need to obtain these at your own cost. If a **lot** contains elephant ivory, or any other wildlife material that could be confused with elephant ivory, (for example, mammoth ivory, walrus ivory, helmeted hornbill ivory) please see further important information in paragraph (c) if you are proposing to import the **lot** into the USA. We will not be obliged to cancel your purchase and refund the **purchase price** if your **lot** may not be exported, imported or it is seized for any reason by a government authority. It is your responsibility to determine and satisfy the requirements of any applicable laws or regulations relating to the export or import of property containing such protected or regulated material.

(d) US import ban on African elephant ivory

The USA prohibits the import of ivory from the African elephant. Any **lot** containing elephant ivory or other wildlife material that could be easily confused with elephant ivory (for example, mammoth ivory, walrus ivory, helmeted hornbill ivory) can only be imported into the US with results of a rigorous scientific test acceptable to Fish & Wildlife, which confirms that the material is not African elephant ivory. Where we have conducted such rigorous scientific testing on a **lot** prior to sale, we will make this clear in the lot description. In all other cases, we cannot confirm whether a **lot** contains African elephant ivory, and you will buy that **lot** at your own risk and be responsible for any scientific test or other reports required for import into the USA at your own cost. If such scientific test is inconclusive or confirms the material is from the African elephant, we will not be obliged to cancel your purchase and refund the **purchase price**.

(e) Lots of Iranian origin

Some countries prohibit or restrict the purchase and/or import of Iranian-origin "works of conventional craftsmanship" (works that are not by a recognized artist and/or that have a function, for example: carpets, bowls, ewers, tiles, ornamental boxes). For example, the USA prohibits the import of this type of property and its purchase by US persons (wherever located). Other countries, such as Canada, only permit the import of this property in certain circumstances. As a convenience to buyers, Christie's indicates under the title of a **lot** if the **lot** originates from Iran (Persia). It is your responsibility to ensure you do not bid on or import a **lot** in contravention of the sanctions or trade embargoes that apply to you.

(f) Gold

Gold of less than 18ct does not qualify in all countries as 'gold' and may be refused import into those countries as 'gold'.

(g) Watches

Many of the watches offered for sale in this catalogue are pictured with straps made of endangered or protected animal materials such as alligator or crocodile. These **lots** are marked with the symbol **Ψ** in the catalogue. These endangered species straps are shown for display purposes only and are not for sale. Christie's will remove and retain the strap prior to shipment from the sale site. At some sale sites, Christie's may, at its discretion, make the displayed endangered species strap available to the buyer of the **lot** free of charge if collected in person from the sale site within 1 year of the date of the sale. Please check with the department for details on a particular **lot**.

For all symbols and other markings referred to in paragraph H2, please note that **lots** are marked as a convenience to you, but we do not accept liability for errors or for failing to mark **lots**.

I OUR LIABILITY TO YOU

(a) We give no **warranty** in relation to any statement made, or information given, by us or our representatives or employees, about any **lot** other than as set out in the **authenticity warranty** and, as far as we are allowed by law, all **warranties** and other terms which may be added to this agreement by law are excluded. The seller's **warranties**

contained in paragraph E1 are their own and we do not have any liability to you in relation to those **warranties**.

(b) (i) We are not responsible to you for any reason (whether for breaking this agreement or for any other matter relating to your purchase of, or bid for, any **lot**) other than in the event of fraud or fraudulent misrepresentation by us or other than as expressly set out in these conditions of sale; and

(ii) We do not give any representation, warranty or guarantee or assume any liability of any kind in respect of any **lot** with regard to merchantability, fitness for a particular purpose, description, size, quality, condition, attribution, authenticity, rarity, importance, medium, provenance, exhibition history, literature, or historical relevance. Except as required by local law, any warranty of any kind is excluded by this paragraph.

(c) In particular, please be aware that our written and telephone bidding services, Christie's LIVE™, **condition** reports, currency converter and saleroom video screens are free services and we are not responsible to you for any error (human or otherwise), omission, breakdown, or delay, unavailability, suspension or termination of any of these services.

(d) We have no **responsibility** to any person other than a buyer in connection with the purchase of any **lot**.

(e) If, in spite of the terms in paragraphs (a) to (d) or E2(i) above, we are found to be liable to you for any reason, we shall not have to pay more than the **purchase price** paid by you to us. We will not be responsible to you for any reason for loss of profits or business, loss of opportunity or value, expected savings or interest, costs, damages, or expenses.

J OTHER TERMS

1 OUR ABILITY TO CANCEL

In addition to the other rights of cancellation contained in this agreement, we can cancel a sale of a **lot** if we reasonably believe that completing the transaction is, or may be, unlawful or that the sale places us or the seller under any liability to anyone else or may damage our reputation.

2 RECORDINGS

We may videotape and record proceedings at any auction. We will keep any personal information confidential, except to the extent disclosure is required by law. However, we may, through this process, use or share these recordings with another **Christie's Group** company and marketing partners to analyse our customers and to help us to tailor our services for buyers. If you do not want to be videotaped, you may make arrangements to make a telephone or written bid or bid on Christie's LIVE™ instead. Unless we agree otherwise in writing, you may not videotape or record proceedings at any auction.

3 COPYRIGHT

We own the copyright in all images, illustrations and written material produced by or for us relating to a **lot** (including the contents of our catalogues unless otherwise noted in the catalogue). You cannot use them without our prior written permission. We do not offer any guarantee that you will gain any copyright or other reproduction rights to the **lot**.

4 ENFORCING THIS AGREEMENT

If a court finds that any part of this agreement is not valid or is illegal or impossible to enforce, that part of the agreement will be treated as being deleted and the rest of this agreement will not be affected.

5 TRANSFERRING YOUR RIGHTS AND RESPONSIBILITIES

You may not grant a security over or transfer your rights or responsibilities under these terms on the contract of sale with the buyer unless we have given our written permission. This agreement will be binding on your successors or estate and anyone who takes over your rights and responsibilities.

6 TRANSLATIONS

If we have provided a translation of this agreement, we will use the English version in deciding any issues or disputes which arise under this agreement.

7 PERSONAL INFORMATION

We will hold and process your personal information and may pass it to another **Christie's Group** company for use as described in, and in line with, our privacy policy at www.christies.com. If you are a resident of California you can see a copy of our California Consumer Privacy Act statement at <https://www.christies.com/about-us/contact/ccpa>.

8 WAIVER

No failure or delay to exercise any right or remedy provided under these Conditions of Sale shall constitute a waiver of that or any other right or remedy, nor shall it prevent or restrict the further exercise of that or any other right or remedy. No single or partial exercise of such right or remedy shall prevent or restrict the further exercise of that or any other right or remedy.

9 LAW AND DISPUTES

The rights and obligations of the parties with respect to these Conditions of Sale, the conduct of the auction and any matters connected with any of the foregoing shall be governed and interpreted by the Hong Kong laws. By bidding at auction, whether present in person or by agent, by written bid, telephone or other means, the buyer shall be deemed to have accepted these Conditions and submitted, for the benefit of Christie's, to the exclusive jurisdiction of the Hong Kong courts, and also accepted that Christie's also has the right to pursue remedies in any other jurisdiction in order to recover any outstanding sums due from the buyer.

10 REPORTING ON WWW.CHRISTIES.COM

Details of all **lots** sold by us, including **catalogue descriptions** and prices, may be reported on www.christies.com. Sales totals are **hammer price** plus **buyer's premium** and do not reflect costs, financing fees, or application of buyer's or seller's credits. We regret that we cannot agree to requests to remove these details from www.christies.com.

K GLOSSARY

auctioneer : individual auctioneer and/or Christie's.
authentic : a genuine example, rather than a copy or forgery of:

(i) the work of a particular artist, author or manufacturer, if the **lot** is described in the **Heading** as the work of that artist, author or manufacturer;

(ii) a work created within a particular period or culture, if the **lot** is described in the **Heading** as a work created during that period or culture;

(iii) a work for a particular origin source if the **lot** is described in the **Heading** as being of that origin or source; or

(iv) in the case of gems, a work which is made of a particular material, if the **lot** is described in the **Heading** as being made of that material.

authenticity warranty : the guarantee we give in this agreement that a **lot** is **authentic** as set out in section E2 of this agreement.

buyer's premium : the charge the buyer pays us along with the **hammer price**.

catalogue description : the description of a **lot** in the catalogue for the auction, as amended by any saleroom notice.

Christie's Group : Christie's International Plc, its subsidiaries and other companies within its corporate group.

condition : the physical **condition** of a **lot**.

due date : has the meaning given to it paragraph F1(a).

estimate : the price range included in the catalogue or any saleroom notice within which we believe a **lot** may sell. **Low estimate** means the lower figure in the range and **high estimate** means the higher figure. The **mid estimate** is the midpoint between the two.

hammer price : the amount of the highest bid the **auctioneer** accepts for the sale of a **lot**.

Heading : has the meaning given to it in paragraph E2.

lot : an item to be offered at auction (or two or more items to be offered at auction as a group).

other damages : any special, consequential, incidental or indirect damages of any kind or any damages which fall within the meaning of 'special', 'incidental' or 'consequential' under local law.

purchase price : has the meaning given to it in paragraph F1(a).

provenance : the ownership history of a **lot**.

qualified : has the meaning given to it in paragraph E2 and **Qualified Headings** means the section headed **Qualified Headings** on the page of the catalogue headed 'Important Notices and Explanation of Cataloguing Practice'.

reserve : the confidential amount below which we will not sell a **lot**.

saleroom notice : a written notice posted next to the **lot** in the saleroom and on www.christies.com, which is also read to prospective telephone bidders and notified to clients who have left commission bids, or an announcement made by the **auctioneer** either at the beginning of the sale, or before a particular **lot** is auctioned.

Subheading : has the meaning given to it in paragraph E2.

UPPER CASE type : means having all capital letters.

warranty : a statement or representation in which the person making it guarantees that the facts set out in it are correct.

業務規定 · 買方須知

業務規定

業務規定和重要通知及目錄編列方法之說明列明佳士得拍賣刊載在本目錄中**拍賣品**的條款。

通過登記競投和 / 或在拍賣會中競投即表示您同意接受這些條款，因此，您須在競投之前仔細閱讀這些條款。下述粗體字體詞語的解釋在尾部詞匯表列明。

除非佳士得擁有**拍賣品**所有權（以△標示），佳士得為賣方的代理人。

A. 拍賣之前

1. 拍賣品描述

(a) **目錄描述**部分使用的某些詞匯有特殊意義。詳情請見構成條款部分的重要通知及目錄編列方法之說明。對目錄內的標識的解釋，請見本目錄內“本目錄中使用的各類標識”。

(b) 本公司在本目錄中對任何**拍賣品**的描述，**拍賣品狀況**報告及其它陳述（不管是口頭還是書面），包括**拍賣品**性質或**狀況**、藝術家、時期、材料、概略尺寸或**來源**均屬我們意見之表述，而不應被作為事實之陳述。我們不像專業的歷史學家及學者那樣進行深入的研究。所有的尺寸及重量僅為粗略估計。

2. 對於**拍賣品**描述佳士得所負的責任

我們不對**拍賣品**的性質提供任何保證，除了下述第 E2 段的**真品保證**以及第 1 段另有約定。

3. 狀況

(a) 在我們拍賣會上拍賣的**拍賣品狀況**可因年代、先前損壞、修復、修理及損耗等因素而差異甚大。其性質即意味著幾乎不可能處於完美的**狀況**。**拍賣品**是按照其在拍賣之時的情況以“現狀”出售，而且不包括佳士得或賣方的任何陳述或保證或對於**狀況**的任何形式的責任承擔。

(b) 在本目錄條目或**狀況**報告中提及**狀況**不同於對**狀況**的完整描述，圖片可能不會清晰展示**拍賣品**。**拍賣品**的色彩和明暗度在印刷品或屏幕上看起來可能會與實體檢查時的情況不同。**狀況**報告可協助您評估**拍賣品**的**狀況**。為方便買方，**狀況**報告為免費提供，僅作為指引。**狀況**報告提供了我們的意見，但是可能未指出所有的缺陷、內在瑕疵、修復、更改及改造，因為我們的僱員不是專業修復或維護人員。出於這個原因，他們不能替您親自檢查**拍賣品**或您自己尋求的專業意見。買方有責任確保自己已經要求提供、收悉及考慮了任何**狀況**報告。

4. 拍賣之前檢查**拍賣品**

(a) 如果您計劃競投一件**拍賣品**，應親自或通過具有專業知識之代表檢視，以確保

您接受**拍賣品**描述及**狀況**。我們建議您從專業修復人員或其它專業顧問那裏索取意見。

(b) 拍賣之前的檢視免費向公眾開放。在拍賣之前的檢視或通過預約，我們的專家可在場回答問題。

5. 估價

估價是基於**拍賣品**的**狀況**、稀有程度、質量、**來源**及類似物品的近期拍價決定。**估價**可能會改變。您或任何其他人在任何情況下都不可能依賴**估價**，將其作為**拍賣品**的實際售價的預測或保證。**估價**不包括買方**酬金**或任何適用的稅費。**估價**可能以拍賣場當地貨幣以外的貨幣顯示並僅作指引。本目錄使用的貨幣兌換率是根據最貼近目錄付印時的兌換率設定，所以可能與拍賣當日兌換率有差別。

6. 撤回

佳士得有權單方面決定在**拍賣品**拍賣過程中或拍賣之前的任何時間將**拍賣品**撤回。佳士得無須就任何撤回決定向您承擔責任。

7. 珠寶

(a) 有色寶石（如紅寶石、藍寶石及綠寶石）可能經過處理以改良外觀，包括加熱及上油等方法。這些方法都被國際珠寶行業認可，但是經處理的寶石的硬度可能會降低及 / 或在日後需要特殊的保養。

(b) 所有類型的寶石均可能經過某些改良處理。如果某件**拍賣品**沒有報告，您可以在拍賣日之前至少提前三周向我們要求寶石鑒定報告，報告的費用由您支付。

(c) 我們不會為每件拍賣的寶石拿取鑒定報告。若我們有從國際認可的寶石鑒定實驗室取得鑒定報告，我們會在目錄中提及。從美國寶石鑒定實驗室發出的鑒定報告會描述對寶石的改良或處理。歐洲寶石鑒定實驗室的報告僅在我們要求的時候，才會提及對寶石的改良及處理，但是該報告會確認該寶石沒有被改良或處理。因各實驗室使用方法和技術的差異，對某寶石是否處理過、處理的程度或處理是否為永久性，都可能持不同意見。寶石鑒定實驗室僅對報告作出日之前實驗室所知悉的改進及處理進行報告。

(d) 對於珠寶銷售來說，**估價**是以寶石鑒定報告中的信息為基礎，如果沒有報告，就會認為寶石可能已經被處理或提升過。

8. 鐘錶

(a) 幾乎所有的鐘錶在使用期內都被修理過，可能都含有非原裝零部件。我們不能**保證**任何鐘錶的任何個別零部件都是原裝。被陳述為“關聯”字樣的錶帶不是原裝錶的部分，可能不是**真品**。拍賣的鐘可能跟隨沒有鐘擺、鐘錘或鑰匙出售。

(b) 收藏家等級的鐘錶經常有非常精細複雜的機械構造，可能需要一般保養服務、更換電池或進一步的修理工作，而這些都由買方負責。我們不**保證**每一隻鐘錶都是在良好運作狀態。除非目錄中有提及，我們不提供證書。

(c) 大多數的錶都被打開過查看機芯的型號及質量。因為這個原因，帶有防水錶殼的錶可能不能防水，在使用之前我們建議您讓專業鐘錶師事先檢驗。

手錶及錶帶的拍賣及運送方面的重要信息，請見第 H2(f) 段。

B. 登記競投

1. 新競投人

(a) 如果這是您第一次在佳士得競投，或者您曾參與我們的拍賣，但在過去兩年內未曾從任何佳士得拍賣場成功競投過任何東西，您必須在拍賣之前至少 48 個小時登記，以給我們足夠的時間來處理及批准您的登記。我們有權單方面不允許您登記成為競投人。您需提供以下資料：

(i) 個人客戶：帶有照片的身份證明（駕照執照、國民身份證或護照）及（如果身份證文件上沒有顯示現時住址資料）現時住址證明，如：用事業帳單或銀行月結單。

(ii) 公司客戶：顯示名稱及注册地址的公司註冊證明或類似文件，公司地址證明，被授權競投者附有相片的身分證文件，由法定代表人簽署及蓋有公司章（若有）的競投授權書，以及列出所有董事和受益股東的文件證明。

(iii) 信托、合夥、離岸公司及其它業務結構，請提前聯繫我們商談要求。

(b) 我們可能要求您向我們提供財務證明及 / 或押金作為許可您競投的條件。如需幫助，請聯繫我們的客戶服務部：+852 2760 1766。

2. 再次參與競投的客人

我們可選擇要求您提供以上 B1(a) 段所提及的現時身份證明，財務證明及 / 或押金作為許可您競投的條件。如果您過去兩年中沒有從我們的拍賣會成功投得**拍賣品**，或者您本次擬出價金額高於過往，請聯繫我們的投標部：+852 2978 9910 或電郵至 bidsasia@christies.com

3. 如果您未能提供正確的文件

如果我們認為，您未能滿足我們對競投者身份及登記手續的要求，包括但不限於完成及滿足本公司可能要求進行的所有反洗黑錢和 / 或反恐佈主義財政審查，我們可能會不允許您登記競投，而如果您成功投得**拍賣品**，我們可能撤銷您與賣方之間的買賣合約。佳士得有權單方面決定所須的身份證明文件類別，作為滿足我們對競投者身份及登記手續的要求。

4. 代表他人競投

- (a) **作為授權競投人：**如果您代表他人競投，在競投前，委託人需要完成以上的登記手續及提供已簽署的授權書，授權您代表其競投。
- (b) **作為隱名委託人的代理人：**如果您以代理人身份為隱名委託人（最終的買方）進行競投，您同意承擔支付**購買款項**和所有其他應付款項的個人責任。並且，您保證：
- (i) 您已經根據所有適用的反洗黑錢及制裁法律對**拍賣品**的最終的買方進行必要的客戶盡職調查，同意我們依賴該盡職調查。並且，您將在不少於 5 年的期間裏保存證明盡職調查的文件和記錄。
- (ii) 您在收到我們書面要求後可以將證明盡職調查的文件和記錄立即提供給獨立第三方審計人員即時查閱。我們不會向任何第三方披露上述文件和記錄，除非 (1) 它已經在公共領域存在，(2) 根據法律要求須被披露，(3) 符合反洗黑錢法律規定。
- (iii) 您和最終的買方之間的安排不是為了便於任何涉稅犯罪。
- (iv) 您不知曉並且沒有理由懷疑用於結算的資金和任何犯罪收入有關或最終的買方因洗黑錢，恐怖活動或其他基於洗黑錢的犯罪而被調查，被起訴或被定罪。

除非競投人和佳士得在拍賣開始前書面同意競投人僅作為佳士得認可並指定的第三方的代理參與競投並且佳士得只會向該指定第三方收取付款，競投人同意繳付**購買款項**和所有其他應付款項負上個人法律責任。

5. 親自出席競投

如果您希望在拍賣現場競投，必須在拍賣舉行前至少 30 分鐘辦理登記手續，並索取競投號碼牌。如需協助，請聯繫客戶服務部：
+852 2760 1766。

6. 競投服務

下述的競投服務是為方便客戶而設，如果在提供該服務出現任何錯誤（人為或其它），遺漏或故障，佳士得均不負上任何責任。

(A) 電話競投

您必須在拍賣開始前至少 24 小時辦理申請電話競投。佳士得只會能夠安排人員協助電話競投的情況下接受電話競投。**估價**低於港幣 30,000 元之**拍賣品**將不接受電話競投。若需要以英語外的其他語言進行競投，須儘早在拍賣之前預先安排。電話競投將可被錄音。以電話競投即代表您同意其對話被錄音。您同意電話競投受業務規定管限。

(B) 在 Christie's LIVE™ 網絡競投

在某些拍賣會，我們會接受網絡競投。請登入 www.christies.com/livebidding，點擊“現場競投”圖標，瞭解如何從電腦聆聽及觀看拍賣及參與競投。網絡競投受業務規定及 Christie's LIVE™ 使用條款的管限，詳情請見 <https://www.christies.com/LiveBidding/OnlineTermsOfUse.aspx> 網站。

(C) 書面競投

您可於本目錄，任何佳士得辦公室或通過 www.christies.com 選擇拍賣並查看**拍賣品**

取得書面競投表格。您必須在拍賣開始前至少 24 小時提交已經填妥的書面競投表格。投標必須是以拍賣會當地的貨幣為單位。**拍賣官**將在參考**底價**後，合理地履行書面競投務求以可能的最低價行使書面標。如果您以書面競投一件沒有**底價**的**拍賣品**，而且沒有其他更高叫價，我們會為您以**低端估價**的 50% 進行競投；或如果您的書面標比上述更低，則以您的書面標的價格進行競投。如佳士得收到多個競投價相等的書面競投，而在拍賣時此等競投價乃該**拍賣品**之最高出價，則該**拍賣品**售給最先送達其書面競投書給本公司之競投人。

C. 舉行拍賣

1. 進入拍賣現場

我們有權不允許任何人進入拍賣場地，參與拍賣，亦可拒絕接受任何競投。

2. 底價

除非另外列明，所有**拍賣品**均有**底價**。不定有**底價**的**拍賣品**，在**拍賣品**號碼旁邊用*標記。**底價**不會高於**拍賣品**的**低端估價**。

3. 拍賣官之酌情權

拍賣官可以酌情選擇：

- (a) 拒絕接受任何競投；
- (b) 以其決定方式將競投提前或拖後，或改變**拍賣品**的順序；
- (c) 撤回任何**拍賣品**；
- (d) 將任何**拍賣品**分開拍賣或將兩件或多件**拍賣品**合併拍賣；
- (e) 重開或繼續競投，即便已經下槌；
- (f) 如果有關於競投的錯誤或者爭議，無論是在拍賣時或拍賣後，選擇繼續拍賣、決定誰是成功競投人、取消**拍賣品**的拍賣，或是將**拍賣品**重新拍賣或出售。如果您相信**拍賣官**在接受成功投標時存在錯誤，您必須在拍賣日後 3 個工作天內提供一份詳細記述您訴求的書面通知。**拍賣官**將本著真誠考慮該訴求。如果**拍賣官**在根據本段行使酌情權，在拍賣完成後決定取消出售一件**拍賣品**，或是將**拍賣品**重新拍賣或出售，**拍賣官**最遲將在拍賣日後第 7 個日曆日結束前通知成功競投人。**拍賣官**有最終決定權。本段不在任何情況下影響佳士得依據本業務規定中任何其他適用規定，包括第 B(3)，E(2)(i)，F(4) 及 J(1) 段中所列的取消權，取消出售一件**拍賣品**的權利。

4. 競投

拍賣官接受以下競投：

- (a) 拍賣會場參與競投的競投人；
- (b) 從電話競投人，通過 Christie's Live™（如第 B6 部分所示）透過網絡競投的競投人；
- (c) 拍賣之前提交佳士得的書面競投（也稱為不在場競投或委托競投）。

5. 代表賣方競投

拍賣官可選擇代表賣方競投的方式連續競投或以回應其他競投者的投標而競投的方式，直至達到底價以下。**拍賣官**不會特別指明此乃代表賣方的競投。**拍賣官**不會代表賣方作出相等於或高於**底價**之出價。就不設**底價**的**拍**

賣品，**拍賣官**通常會以**低端估價**的 50% 開始拍賣。如果在此價位沒有人競投，**拍賣官**可以自行斟酌將價格下降繼續拍賣，直至有人競投，然後從該價位向上拍賣。如果無人競投該**拍賣品**，**拍賣官**可視該**拍賣品**為流拍**拍賣品**。

6. 競投價遞增幅度

競投通常從低於**低端估價**開始，然後逐步增加（競投價遞增幅度）。**拍賣官**會自行決定競投開始價位及遞增幅度。本目錄內的書面競投表格上顯示的是一般遞增幅度，僅供閣下參考。

7. 貨幣兌換

拍賣會的顯示板，Christie's Live™ 和佳士得網站可能會以拍賣會當地貨幣外的主要貨幣來展示競投。任何佳士得使用的兌換率僅作指引，佳士得並不受其約束。對於在提供該服務出現的任何錯誤（人為或其它），遺漏或故障，佳士得並不負責。

8. 成功競投

除非**拍賣官**決定使用以上 C3 段中的酌情權，**拍賣官**下槌即表示對最終競投價之接受。這代表賣方和成功競投人之間的買賣合約之訂立。我們僅向已登記的成功競投人開具發票。拍賣後我們會以郵寄及 / 或電子郵件方式發送發票，但我們並不負責通知閣下競投是否成功。如果您以書面競投，拍賣後您應儘快以電話聯繫我們或親臨本公司查詢競投結果，以避免產生不必要的倉儲費用。

9. 競投地法律

當您在我們的拍賣中競投時，您同意您會嚴格遵守所有在拍賣時生效並適用於相關拍賣場所的當地法律及法規。

D. 買方酬金及稅款

1. 買方酬金

成功競投人除支付**成交價**外，亦同意支付本公司以該**拍賣品****成交價**計算的**買方酬金**。酬金費率按每件**拍賣品****成交價**首港幣 5,000,000 元之 25%；加逾港幣 5,000,000 元以上至港幣 50,000,000 元部分之 20%；加逾港幣 50,000,000 元以上之 14.5% 計算。

2. 稅費

成功競投者將負責所有適用**拍賣品**稅費，包括增值稅，銷售或補償使用稅費或者所有基於**成交價**和**買方酬金**而產生的該等稅費。買方有責任查明並支付所有應付稅費。在任何情況下香港法律先決適用。佳士得建議您徵詢獨立稅務意見。

有關佳士得運送至美國的**拍賣品**，不論買方國籍或公民身份，均可能須支付基於**成交價**，**買方酬金**和 / 或與**拍賣品**相關的其他費用而產生的州銷售稅或使用稅費。佳士得將根據法律要求收取銷售稅。適用銷售稅率由**拍賣品**將運送到的州分，縣，地點而決定。要求豁免銷售稅的成功競投人必須在提取**拍賣品**之前向佳士得提供適當文件。佳士得不須收取稅費的州分，成功競投人可能須繳付稅費予該州分的稅務機構。佳士得建議您徵詢獨立稅務意見。

E. 保證

1. 賣方保證

對於每件**拍賣品**，賣方保證其：

- 為**拍賣品**的所有人，或**拍賣品**的共有者之一並獲得其他共有者的許可；或者，如果賣方不是**拍賣品**的所有人或共有者之一，其已獲得所有人的授權出售**拍賣品**或其法律上有權這麼做；
- 有權利將**拍賣品**的所有權轉讓給買方，且該權利不負擔任何限制或任何其他人之索賠權。

如果以上任何**保證**不確實，賣方不必支付超過您已向我們支付的**購買款項**（詳見以下第F1(a)段定義）的金額。賣方不會就閣下利潤上或經營的損失、預期存款、商機喪失或利息的損失、成本、賠償金、**其他賠償**或支出承擔責任。賣方不就任何**拍賣品**提供任何以上列舉之外的**保證**；只要法律許可，所有賣方對您做出的**保證**及法律要求加入本協議的所有其它賣方責任均被免除。

2. 真品保證

在不抵觸以下條款的情況下，本公司保證我們拍賣的**拍賣品**都是**真品**（我們的“**真品保證**”）。如果在拍賣日後的五年內，您通知我們您的**拍賣品**不是**真品**，在符合以下條款規定之下，我們將把您支付的**購買款項**退還給您。業務規定的詞匯表裏有對“**真品**”一詞做出解釋。**真品保證**條款如下：

- 我們對在拍賣日後 5 年內提供的申索通知提供**真品保證**。此期限過後，我們不再提供**真品保證**。
- 我們只會對本**目錄描述**第一行（“**標題**”）以**大階字體**注明的資料作出**真品保證**。除了**標題**中顯示的資料，我們不對任何**標題**以外的資料（包括**標題**以外的大階字體注明）作出任何**保證**。
- 真品保證**不適用於有**保留標題**或任何有保留的部分**標題**。有**保留**是指受限於**拍賣品目錄描述**內的解釋，或者**標題**中有“重要通告及目錄編列方法之說明”內有**保留標題**的某些字眼。例如：**標題**中對“認為是...之作品”的使用指佳士得認為**拍賣品**可能是某位藝術家的作品，但是佳士得不**保證**該作品一定是該藝術家的作品。在競投前，請閱畢“有**保留標題**”列表及**拍賣品**的**目錄描述**。
- 真品保證**適用於被**拍賣會通告**修訂後的**標題**。
- 真品保證**不適用於在拍賣之後，學術發展導致被普遍接受的學者或專家意見有所改變。此**保證**亦不適用於在拍賣日時，**標題**合乎被普遍接受的學者或專家的意見，或**標題**指出意見衝突的地方。
- 如果**拍賣品**只有通過科學鑒定方法才能鑒定出不是**真品**，而在我們出版目錄之日，該科學方法還未存在或未被普遍接納，或價格太昂貴或不實際，或者可能損壞**拍賣品**，則**真品保證**不適用。
- 真品保證**僅適用於**拍賣品**在拍賣時由佳士得發出之發票之原本買方，且僅在申索通知做出之日原本買方是**拍賣品**的唯一所有人，且**拍賣品**不受其他申索權、權利主張或任何其他制約的限制。此**真品保證**中的利益不可以轉讓。

(h) 要申索**真品保證**下的權利，您必須：

- 在拍賣日後 5 年內，向我們提供書面的申索通知。我們可以要求您提供上述申索完整的細節及佐證證據；
 - 佳士得有權要求您提供為佳士得及您均事先同意的在此**拍賣品**領域被認可的兩位專家的書面意見，確認該**拍賣品**不是**真品**。如果我們有任何疑問，我們保留自己支付費用獲取更多意見的權利；及
 - 自費交回與拍賣時狀況相同的**拍賣品**給佳士得拍賣場。
- (i) 您在**真品保證**下唯一的權利就是取消該項拍賣及取回已付的**購買款項**。在任何情況下我們不須支付您超過您已向我們支付的**購買款項**的金額，同時我們也無須對任何利潤或經營損失、商機或價值喪失、預期存款或利息、成本、賠償金或**其他賠償**或支出承擔責任。
- (j) **書籍**。如果**拍賣品**為書籍，我們提供額外自拍賣日起為期 14 天的**保證**，如經校對後，**拍賣品**的文本或圖標存有瑕疵，在以下條款的規限下，我們將退回已付的**購買款項**：
- 此額外**保證**不適用於：
 - 缺少空白頁、扉頁、保護頁、廣告、及書籍鑲邊的破損、污漬、邊緣磨損或其它不影響文本及圖標完整性的瑕疵；
 - 繪圖、簽名、書信或手稿；帶有簽名的照片、音樂唱片、地圖冊、地圖或期刊；
 - 沒有標題的書籍；
 - 沒有標明估價的已售**拍賣品**；
 - 目錄中表明售出後不可退貨的書籍；
 - 狀況報告中或拍賣時公告的瑕疵。
 - 要根據本條規定申索權利，您必須在拍賣後的 14 天內就有關瑕疵提交書面通知，並交回與拍賣時狀況相同的**拍賣品**給當時進行拍賣的佳士得拍賣行。
- (k) **東南亞現代及當代藝術以及中國書畫**。**真品保證**並不適用於此類別**拍賣品**。目前學術界不容許對此類別作出確實之說明，但佳士得同意取消被證實為贗品之東南亞現代及當代藝術以及中國書畫**拍賣品**之交易。已付之**購買款項**則根據佳士得**真品保證**的條款退還予原本買方，但買方必須在拍賣日後 12 個月內，向我們提供書面的申索通知。我們可以要求您提供上述申索完整的細節及佐證證據。買方需按以上 E2(h)(ii) 的規定提供令佳士得滿意的證據，證實該**拍賣品**為贗品，及須按照以上 E2(h)(iii) 規定交回**拍賣品**給我們。E2(b), (c), (d), (e), (f), (g) 和 (i) 適用於此類別之申索。
- (l) **中國、日本及韓國工藝品（中國、日本及韓國書畫、版畫、素描及珠寶除外）**。以上 E2(b)-(e) 在此類別**拍賣品**將作修改如下。當創作者或藝術家未有列明時，我們不僅為**標題**作出**真品保證**，並會對本**目錄描述**第二行以**大階字體**注明的有關日期或時期的資料提供**真品保證**（“**副標題**”）。以上 E2(b)-(e) 所有提及**標題**之處應被理解為**標題**及**副標題**。

F. 付款

1. 付款方式

- (a) 拍賣後，您必須立即支付以下**購買款項**：
- 成交價**；和
 - 買方酬金**；和
 - 任何關稅、有關貨物、銷售、使用、補償或服務稅項。

所有款項須於拍賣後 7 個日曆天內悉數付清（“**到期付款日**”）。

- (b) 我們只接受登記競投人付款。發票一旦開具，發票上買方的姓名不能更換，我們亦不能以不同姓名重新開具發票。即使您欲將**拍賣品**出口且需要出口許可證，您也必須立即支付以上款項。

(c) 在香港佳士得購買的**拍賣品**，您必須按照發票上顯示的貨幣以下列方式支付：

- 佳士得通過“**MyChristie's**”網上賬戶為客人提供查看發票、付款及運送服務。您可直接登錄查詢（如您還未註冊線上賬戶，請登錄 www.christies.com/MyChristies 進行註冊）。本服務適用於大多數**拍賣品**，但仍有少數**拍賣品**的付款和運送安排不能通過網上進行。如需協助，請與售後服務部聯絡。

- 電匯至：
香港上海匯豐銀行總行
香港中環皇后大道中 1 號
銀行編號：004
賬號：062-305438-001
賬名：Christie's Hong Kong Limited
收款銀行代號：HSBCHKHHHKH

- 信用卡
在符合我們的規定下，我們接受各種主要信用卡付款。本公司每次拍賣接受總數不超過港幣 1,000,000 元之現場信用卡付款，但有關條款及限制適用。以中國銀聯支付方式沒有金額限制。如要以“持卡人不在場”（CNP）的方式支付，本公司每次拍賣接受總數不超過港幣 1,000,000 元之付款。CNP 付款不適用於所有佳士得拍賣場，並受某些限制。適用於信用卡付款的條款和限制可從佳士得的售後服務部獲取，詳情列於以下 (d) 段：

- 現金
本公司每年只接受每位買方總數不超過港幣 80,000 元之現金付款（須受有關條件約束）；
 - 銀行匯票
抬頭請注明「佳士得香港有限公司」（須受有關條件約束）；
 - 支票
抬頭請注明「佳士得香港有限公司」。支票必須於香港銀行承兌並以港幣支付。
- (d) 支付時請注明拍賣號碼、發票號碼及客戶號碼；以郵寄方式支付必須發送到：佳士得香港有限公司，售後服務部（地址：香港中環遮打道 18 號歷山大廈 22 樓）。
- (e) 如要瞭解更多信息，請聯繫售後服務部。電話 +852 2760 1766 或發電郵至 postsaleasia@christies.com。

2. 所有權轉移

只有我們自您處收到全額且清算**購買款項**後，您才擁有**拍賣品**及**拍賣品**的所有權，即使本公司已將**拍賣品**交給您。

3. 風險轉移

拍賣品的風險和責任自以下日期起將轉移給您（以較早者為準）：

- 買方提貨日；
- 自拍賣日起 30 日後，如較早，則**拍賣品**由第三方倉庫保管之日起；除非另行協議。

4. 不付款之補救辦法

- 如果**到期付款日**，您未能全數支付**購買款項**，我們將有權行使以下一項或多項（及執行我們在 F5 段的權利以及法律賦予我們的其它權利或補救辦法）：

- 自**到期付款日**起，按照尚欠款項，收取高於香港金融管理局不時公布的三個月銀行同業拆息加 7% 的利息；
- 取消交易並按照我們認為合適的條件對**拍賣品**公開重新拍賣或私下重新售賣。您必須向我們支付原來您應支付的**購買款項**與再次轉賣收益之間的差額。您也必須支付我們必須支付或可能蒙受的一切成本、費用、損失、賠償，法律費用及任何賣方酬金的差額；
- 代不履行責任的買方支付賣方應付的拍賣淨價金額。您承認佳士得有賣方之所有權利向您提出追討。
- 您必須承擔尚欠之**購買款項**，我們可就取回此金額而向您提出法律訴訟程序及在法律許可下向您索回之其他損失、利息、法律費用及其他費用；
- 將我們或**佳士得集團**任何公司欠下您之款項（包括您已付給我們之任何保證金或部分付款）用以抵銷您未付之款項；
- 我們可以選擇將您的身份及聯繫方式披露給賣方；
- 在將來任何拍賣中，不允許您或您的代表作出競投，或在接受您競投之前向您收取保證金；
- 在**拍賣品**所處地方之法律許可之下，佳士得就您擁有並由佳士得管有的**拍賣品**作為抵押品並以抵押品持有人身份行使最高程度之權利及補救方法，不論是以典當方式、抵押方式或任何其他形式。您則被視為已授與本公司該等抵押及本公司可保留或售賣此物品作為買方對本公司及賣方的附屬抵押責任；和
- 採取我們認為必要或適當的任何行動。

- 將您已付的款項，包括保證金及其他部份付款或我們欠下您之款項用以抵銷您我們或其他**佳士得集團**公司的款項。

- 如果您在**到期付款日**之後支付全部款項，同時，我們選擇接受該付款，我們可以自拍賣後第 31 日起根據 G(d)(i) 及(ii) 段向您收取倉儲和運輸費用。在此情況下，G(d)(iv) 段將適用。

5. 扣押拍賣品

如果您欠我們或其他**佳士得集團**公司款項，除了以上 F4 段的權利，在法律許可下，我們可以以任何方式使用或處置您存於我們或其它**佳士得集團**公司的**拍賣品**。只有在您全額支付欠下我們或相關**佳士得集團**公司的全部款項後，您方可領取有關**拍賣品**。我們亦可選擇將您的**拍賣品**按照我們認為適當的方式出售。我們將用出售**拍賣品**的銷售所得來抵銷您欠下我們的任何款項，並支付您任何剩餘部分。如果銷售所得不足以抵扣，您須支付差額。

G. 提取及倉儲

- 我們要求您在拍賣之後立即提取您購買的**拍賣品**（但請注意，在全數付清所有款項之前，您不可以提取**拍賣品**）。
- 有關提取**拍賣品**之詳情，請聯繫售後服務部。電話 +852 2760 1766 或發電郵至：postsaleasia@christies.com
- 如果您未在拍賣完畢立即提取您購買的**拍賣品**，我們有權將**拍賣品**移送到其他佳士得所在處或其關聯公司或第三方倉庫。
- 如果您未在拍賣後第三十個日曆日或之前提取您購買的**拍賣品**，除非另有書面約定：
 - 我們將自拍賣後第 31 日起向您收取倉儲費用。
 - 我們有權將**拍賣品**移送到關聯公司或第三方倉庫，並向您收取因此產生的運輸費用和處理費用。
 - 我們可以按我們認為商業上合理且恰當的方式出售**拍賣品**。
 - 倉儲的條款適用，條款請見 www.christies.com/storage。
 - 本段的任何內容不限制我們在 F4 段下的權利。

H. 運送

1. 運送

運送或付運表格會與發票一同發送給您。您須自行安排**拍賣品**的運送和付運事宜。我們也可以依照您的要求安排包裝運送及付運事宜，但您須支付有關收費。我們建議您在競投前預先查詢有關收費的估價，尤其是需要專業包裝的大件物品或高價值。應您要求，我們也可建議處理員、包裝、運輸公司或有關專家。

詳情請聯繫佳士得售後服務部，電話：+852 2760 1766 或發電郵至 postsaleasia@christies.com。我們會合理謹慎處理、包裝、運輸**拍賣品**。若我們就上述目的向您推薦任何其他公司，我們不會承擔有關公司之行為，遺漏或疏忽引致的任何責任。

2. 出口 / 進口

拍賣售出的任何**拍賣品**都可能受**拍賣品**售出國家的出口法律及其他國家的進口法律限制。

許多國家就**拍賣品**出境要求出口聲明及 / 或就**拍賣品**入境要求進口聲明。進口國當地法律可能會禁止進口某些**拍賣品**或禁止**拍賣品**在進口國出售。

我們不會因您所購買的**拍賣品**無法出口，進口或出於任何原因遭政府機構沒收而有責任取消您的購買或向您退換**購買款項**。您應負

責確認並滿足任何法律或法規對出口或進口您購買的**拍賣品**的要求。

- 在競投前，您應尋求專業意見並負責滿足任何法律或法規對出口或進口**拍賣品**的要求。如果您被拒發許可證，或申請許可證延誤，您仍須全數支付**拍賣品**的價款。如果您提出請求，在我們能力範圍許可內，我們可以協助您申請所需許可證，但我們會就此服務向您收取費用。我們不保證必能獲得許可證。如欲了解詳情，請聯繫佳士得售後服務部，電話：+852 2760 1766 或發郵件至 postsaleasia@christies.com。

- 您應負責支付與**拍賣品**出口或進口有關的所有適用稅費、關稅或其他政府徵收的費用。如果佳士得為您出口或進口**拍賣品**，且佳士得支付了上述適用的稅費、關稅或其他政府徵收的費用，您同意向佳士得退還該筆費用。

(c) 含有受保護動植物物的**拍賣品**

由瀕臨絕種及其他受保護野生動植物製造或組成（不論分比率）的**拍賣品**在本目錄中註有 [~] 號。

這些物料包括但不限於象牙、玳瑁殼、鱷魚皮、犀牛角、鯨骨、某些珊瑚品種及玫瑰木。若您有意將含有野生動物物料的任何**拍賣品**進口至其他國家，您須於競投該**拍賣品**之前了解有關海關法例和規定。有些國家完全禁止含有這類物料的物品進口，而其他國家則規定須向出口及入口國家的有關管理机构取得許可證。在有些情況下，**拍賣品**必須附有獨立的物種的科學證明和 / 或年期證明，方能裝運，而您須要自行安排上述證明並負責支付有關的費用。如果一件**拍賣品**含有象牙或其他可能和象牙相混淆的野生動物材料（例如猛獁象牙，海象象牙和犀鳥象牙）且您計劃將上述**拍賣品**進口到美國，請查看 (c) 段中之重要信息。如果您無法出口，進口該**拍賣品**或因任何原因**拍賣品**被政府部門查收，我們沒有義務因此取消您的交易並退回您的**購買款項**。您應負責確定並滿足有關含有上述物料**拍賣品**進出口的法律和規例要求。

(d) 美國關於非洲象牙的進口禁令

美國禁止非洲象牙進口美國。如果一件**拍賣品**含有象牙或其他可能和象牙相混淆的野生材料（例如猛獁象牙，海象象牙和犀鳥象牙），其必須通過受美國漁業和野生動物保護局認可的嚴格科學測試確認該物料非非洲象牙後方可進口美國。如果我們在拍賣前對**拍賣品**已經進行了該嚴格科學測試，我們會在**拍賣品**陳述中清楚表明。我們一般無法確認相關**拍賣品**的象牙是否來自非洲象。您凡購買有關**拍賣品**並計畫將有關**拍賣品**進口美國，必須承擔風險並負責支付任何科學測試或其他報告的費用。有關測試並無定論或確定物料非非洲象牙，不被視為取消拍賣和退回**購買款項**的依據。

(e) 源自伊朗的**拍賣品**

一些國家禁止或限制購買和 / 或進口源自伊朗的“傳統工藝作品”（身份不明確的藝術家作品及 / 或功能性作品。例

如：地毯、碗、大口水壺、瓷磚和裝飾盒）。美國禁止進口以上物品亦禁止美國民眾（不論所在處）購買以上物品。有些國家，例如加拿大則允許在某特定情況下可以進口上述物品。為方便買方，佳士得在源自伊朗（波期）的**拍賣品**下方特別注明。如您受以上制裁或貿易禁運限制，您須確保您不會競投或進口有關**拍賣品**，違反有關適用條例。

(f) **黃金**

含量低於 18k 的黃金並不是在所有國家均被視為「黃金」，並可能被拒絕入口。

(g) **鐘錶**

本目錄內有些錶帶的照片顯示該手錶配有瀕危及受保護動物（如短吻鱷或鱷魚）的物料所製成的錶帶。這些**拍賣品**在本目錄內的**拍賣品**編號旁以 Ψ 符號顯示。這些錶帶只用來展示**拍賣品**並不作銷售用途。在運送手錶到拍賣地以外的地點前，佳士得會把上述錶帶拆除並予以保存。買方若在拍賣後一年內親身到拍賣所在地的佳士得提取，佳士得可酌情免費提供該展示用但含有瀕危及受保護動物物料的錶帶給買方。

H2 段中的標記是佳士得為了方便閣下而在有關**拍賣品**附加的，附加標記時如有任何錯誤或遺漏，佳士得恕不承擔任何責任。

I. 佳士得之法律責任

- (a) 除了**真品保證**，佳士得、佳士得代理人或僱員，對任何**拍賣品**作任何陳述，或資料的提供，均不作出任何**保證**。在法律容許的最大程度下，所有由法律附加的**保證**及其他條款，均被排除在本協議外。在 E1 段中的賣方**保證**是由賣方提供的**保證**，我們對這些**保證**不負有任何責任。
- (b) (i) 除非我們以欺詐手段作出有欺詐成份的失實陳述或在本業務規定中另有明確說明，我們不會因任何原因對您負有任何責任（無論是因違反本協議，購買**拍賣品**或與競投相關的任何其他事項）；和
- (ii) 本公司無就任何**拍賣品**的可商售品質、是否適合某特定用途、描述、尺寸、質量、**狀況**、作品歸屬、真實性、稀有程度、重要性、媒介、來源、展覽歷史、文獻或歷史的關聯等作出任何陳述、**保證**或擔保或承擔任何責任。除非當地的法律強制要求，任何種類之任何**保證**，均被本段排除在外。
- (c) 請注意佳士得所提供的書面競投及電話競投服務、Christie's Live™、**狀況**報告、貨幣兌換顯示板及拍賣室錄像影像為免費服務，如有任何錯誤（人為或其它原因）、遺漏或故障或延誤、未能提供、暫停或終止，本公司不負任何責任。
- (d) 就**拍賣品**購買的事宜，我們僅對買方負有法律責任。
- (e) 如果儘管有 (a) 至 (d) 或 E2(i) 段的規定，我們因某些原因須對您負上法律責任，我們不須支持超過您已支付的**購買款項**。佳士得不須就任何利潤或經營損失、商機喪失或價值、預期存款或利息、費用、賠償或支出等原因負上任何責任。

J. 其它條款

1. 我們的撤銷權

除了本協議中的其他撤銷權利，如果我們合理地認為完成交易可能是違法行為或該銷售會令我們或賣方向任何人負上法律責任或損壞我們的名聲，我們可取消該**拍賣品**的拍賣。

2. 錄像

我們可以錄影及記錄拍賣過程。除非按法律要求，我們會對個人信息加以保密。該資料可能用於或提供其他**佳士得集團**公司和市場夥伴以作客戶分析或以便我們向買方提供合適的服務。若您不想被錄影，您可透過電話或書面競投或者在 Christie's Live™ 競投。除非另有書面約定，您不能在拍賣現場錄像或錄音。

3. 版權

所有由佳士得或為佳士得與**拍賣品**有關之製作之一切圖片、插圖與書面資料（除有特別註釋外，包括我們的目錄的內容）之版權均屬於佳士得所有。沒有我們的事先書面許可不得使用以上版權作品。我們沒有保證您就投得的**拍賣品**會取得任何版權或其他複製的權利。

4. 效力

如本協議的任何部份遭任何法院認定為無效、不合法或無法執行，則該部分應被視為刪除，其它部分不受影響。

5. 轉讓您的權利及責任

除非我們給予書面許可，否則您不得就您在本協議下的權利或責任設立任何抵押，亦不得轉讓您的權利和責任。本協議對您的繼任人、遺產及任何承繼閣下責任的人具有約束力。

6. 翻譯

如果我們提供了本協議的翻譯件，我們將會使用英文版用於解決本協議項下產生的任何問題以及爭議。

7. 個人信息

您同意我們將持有並處理您的個人數據或信息，並將其交給其它**佳士得集團**公司用於我們的私隱政策所描述的，或與其相符的目的。您可以在 www.christies.com 上找到本公司私隱政策。如您是加利福尼亞州居民，您可在 <https://www.christies.com/about-us/contact/ccpa> 看到我們的《加州消費者隱私法》(California Consumer Privacy Act) 聲明。

8. 棄權

未能或延遲行使本業務規定下的權利或補償不應被視為免除該權利或補償，也不應阻止或限制對該權利或補償或其他權利或補償的行使。單獨或部分行使該權利或補償不應阻止或限制對其它權利或補償的行使。

9. 法律及管轄權

各方的權利及義務，就有關本業務規定，拍賣的行為及任何與上述條文的事項，均受香港法律管轄及根據香港法律解釋。在拍賣競投時，無論是親自出席或由代理人出席競投，書面、電話及其他方法競投，買方則被

視為接受本業務規定，及為佳士得之利益而言，接受香港法院之排他性管轄權，並同時接納佳士得亦有權在任何其他司法管轄區提出索償，以追討買方拖欠的任何款項。

10. www.christies.com 的報告

售出的**拍賣品**的所有資料，包括**目錄描述**及**價款**都可在 www.christies.com 上查閱。銷售總額為**成交價**加上**買方酬金**，其不反映成本、財務費用或買方或賣方信貸申請情況。我們不能按要求將這些資料從 www.christies.com 網站上刪除。

K. 詞匯表

拍賣官：個人拍賣官和 / 或佳士得。

真品：以下所述的真實作品，而不是複製品或贗品：

- 拍賣品**在**標題**被描述為某位藝術家、作者或製作者的作品，則為該藝術家、作者或製造者的作品；
- 拍賣品**在**標題**被描述為是某時期或流派創作的作品，則該時期或流派的作品；
- 拍賣品**在**標題**被描述為某來源，則為該來源的作品；
- 以寶石為例，如**拍賣品**在**標題**被描述為由某種材料製成，則該作品是由該材料製成。

真品保證：我們在本協議 E 段所詳述為**拍賣品**提供的**保證**。

買方酬金：除了**成交價**，買方支付給我們的費用。

目錄描述：拍賣目錄內對**拍賣品**的陳述（包括於拍賣場通過對有關陳述作出的任何更改）。

佳士得集團：Christie's International Plc、其子公司及集團的其它公司。

狀況：**拍賣品**的物理狀況。

到期付款日：如第 F1(a) 段所列出的意思。

估價：目錄中或拍賣場通告中列明的我們認為**拍賣品**可能出售的價格範圍。**低端估價**指該範圍的最低價；**高端估價**指該範圍的最高價。**中間估值**為兩者的中間點。

成交價：**拍賣官**接受的**拍賣品**最高競投價。

標題：如 E2 段所列出的意思。

拍賣品：供拍賣的一件**拍賣品**（或作為一組拍賣的兩件或更多的物件）；

其他賠償：任何特殊、連帶、附帶或間接的賠償或任何符合當地法律規定的“特殊”、“附帶”或“連帶”賠償。

購買款項：如第 F1(a) 段的意思。

來源：**拍賣品**的所有權歷史。

有保留：如 E2 段中的意思；**有保留標題**則指目錄中“重要通知和目錄編制說明”頁中的“**有保留標題**”的意思。

底價：**拍賣品**不會以低於此保密密底價出售。**拍賣場通告**：張貼位於拍賣場內的**拍賣品**旁或 www.christies.com 的書面通知（上述通知內容會另行通知以電話或書面競投的客戶），或拍賣會舉行前或拍賣某**拍賣品**前**拍賣官**宣布的公告。

副標題：如 E2 段所列出的意思。

大楷字體：指包含所有的大寫字母。

保證：陳述人或聲明人保證其所陳述或聲明的事實為正確。

SYMBOLS USED IN THIS CATALOGUE

The meaning of words coloured in **bold** in this section can be found at the end of the section of the catalogue headed 'Conditions of Sale - Buying at Christie's'

○ Christie's has a direct financial interest in the **lot**. See Important Notices and Explanation of Cataloguing Practice.

△ Owned by Christie's or another **Christie's Group** company in whole or in part. See Important Notices and Explanation of Cataloguing Practice.

◆ Christie's has a direct financial interest in the **lot** and has funded all or part of our interest with the help of someone else. See Important Notices and Explanation of Cataloguing Practice.

✂ Bidding by parties with an interest.

● **Lot** offered without **reserve** which will be sold to the highest bidder regardless of the pre-sale estimate in the catalogue.

~ **Lot** incorporates material from endangered species which could result in export restrictions. See Section H2(b) of the Conditions of Sale - Buying at Christie's.

Ψ **Lot** incorporates material from endangered species that is not for sale and is shown for display purposes only.

Please note that **lots** are marked as a convenience to you and we shall not be liable for any errors in, or failure to, mark a **lot**.

本目錄中使用的各類標識

本部份粗體字體詞語的涵義載於本目錄中題為“業務規定·買方須知”一章的最後一頁。

○ 佳士得對該**拍賣品**擁有直接經濟利益。請參閱重要通知及目錄編列方法之說明。

△ 全部或部分由佳士得或其他**佳士得集團**公司持有。請參閱重要通知及目錄編列方法之說明。

◆ 佳士得對該**拍賣品**擁有直接經濟利益，佳士得的全部或部分利益通過第三方融資。請參閱重要通知及目錄編列方法之說明。

✂ 利益方的競投。

● 不設**底價**的**拍賣品**，不論其在本目錄中的售前**估價**，該**拍賣品**將售賣給出價最高的競投人。

~ **拍賣品**含有瀕危物種的材料，可能受出口限制。請參閱業務規定·買方須知第 H2(b) 段。

Ψ **拍賣品**含有瀕危物種的材料，只用作展示用途，並不作銷售。

請注意對藏品的標記僅為您提供方便，本公司不承擔任何因標示錯誤或遺漏標記的責任。

IMPORTANT NOTICES AND EXPLANATION OF CATALOGUING PRACTICE

IMPORTANT NOTICES

CHRISTIE'S INTEREST IN PROPERTY CONSIGNED FOR AUCTION

△ **Property Owned in part or in full by Christie's**
From time to time, Christie's may offer a lot which it owns in whole or in part. Such property is identified in the catalogue with the symbol △ next to its lot number. Where Christie's has an ownership or financial interest in every lot in the catalogue, Christie's will not designate each lot with a symbol, but will state its interest in the front of the catalogue.

○ **Minimum Price Guarantees:**

On occasion, Christie's has a direct financial interest in the outcome of the sale of certain lots consigned for sale. This will usually be where it has guaranteed to the Seller that whatever the outcome of the auction, the Seller will receive a minimum sale price for the work. This is known as a minimum price guarantee. Where Christie's holds such financial interest we identify such lots with the symbol ○ next to the lot number.

○◆ **Third Party Guarantees/ Irrevocable bids**

Where Christie's has provided a Minimum Price Guarantee it is at risk of making a loss, which can be significant, if the lot fails to sell. Christie's therefore sometimes chooses to share that risk with a third party who agrees prior to the auction to place an irrevocable written bid on the lot. If there are no other higher bids, the third party commits to buy the lot at the level of their irrevocable written bid. In doing so, the third party takes on all or part of the risk of the lot not being sold. Lots which are subject to a third party guarantee arrangement are identified in the catalogue with the symbol ○◆.

Christie's compensates the third party in exchange for accepting this risk provided that the third party is not the successful bidder. The remuneration to the

third party may either be based on a fixed fee or an amount calculated against the final hammer price. The third party may also bid for the lot above the irrevocable written bid. Where the third party is the successful bidder, the third party is required to pay the hammer price and the buyer's premium in full.

Third party guarantors are required by us to disclose to anyone they are advising their financial interest in any lots they are guaranteeing. However, for the avoidance of any doubt, if you are advised by or bidding through an agent on a lot identified as being subject to a third party guarantee you should always ask your agent to confirm whether or not he or she has a financial interest in relation to the lot.

✂ **Bidding by parties with an interest**

When a party with a direct or indirect interest in the lot who may have knowledge of the lot's reserve or other material information may be bidding on the lot, we will mark the lot with this symbol ✂. This interest can include beneficiaries of an estate that consigned the lot or a joint owner of a lot. Any interested party that successfully bids on a lot must comply with Christie's Conditions of Sale, including paying the lot's full Buyer's Premium plus applicable taxes.

Post-catalogue notifications

In certain instances, after the catalogue has been published, Christie's may enter into an arrangement or become aware of bidding that would have required a catalogue symbol. In those instances, a pre-sale or pre-lot announcement will be made.

Other Arrangements

Christie's may enter into other arrangements not involving bids. These include arrangements where Christie's has made loans or advanced money to consignors or prospective purchasers or where Christie's has shared the risk of a guarantee with

a partner without the partner being required to place an irrevocable written bid or otherwise participating in the bidding on the lot. Because such arrangements are unrelated to the bidding process they are not marked with a symbol in the catalogue.

Please see <http://www.christies.com/financial-interest/> for a more detailed explanation of minimum price guarantees and third party financing arrangements.

EXPLANATION OF CATALOGUING PRACTICE

Terms used in a catalogue or lot description have the meanings ascribed to them below. Please note that all statements in a catalogue or lot description as to authorship, period, reign or dynasty are made subject to the provisions of the Conditions of Sale, including the Authenticity Warranty. Our use of these expressions does not take account of the condition of the lot or of the extent of any restoration. Buyers are advised to inspect the property themselves. Written condition reports are usually available on request.

A term and its definition listed under 'Qualified Headings' is a qualified statement as to authorship, period, reign or dynasty. While the use of this term is based upon careful study and represents the opinion of specialists, Christie's and the consignor assume no risk, liability and responsibility for the authenticity of authorship or of the lot being created in certain period, reign or dynasty of any lot in this catalogue described by this term, and the Authenticity Warranty shall not be available with respect to lots described using this term.

Discrepancy in the layout of information may appear between the catalogue description in English and its Chinese translation. We will use the English version of the catalogue description in deciding any

issue or disputes which arise under the Authenticity Warranty or the 'Qualified Headings'.

- In Christie's opinion a work by the maker or artist e.g. A YIXING TEAPOT BY CHEN MINGYUAN KANGXI PERIOD (1662-1722)
- When a piece is, in Christie's opinion, of a certain period, reign or dynasty, its attribution appears in uppercase letters directly below the heading of the description of the lot. e.g. A BLUE AND WHITE BOWL QING DYNASTY, 18TH CENTURY
- If the date, period or reign mark mentioned in uppercase letters directly below the heading of the description of the lot states that the mark is of the period, then in Christie's opinion, the piece is of the date, period or reign of the mark. e.g. A BLUE AND WHITE BOWL KANGXI SIX-CHARACTER MARK IN UNDERGLAZE BLUE AND OF THE PERIOD (1662-1722)

- When a piece is, in Christie's opinion, made no later than a certain period, reign or dynasty, its attribution appears in uppercase letters directly below the heading of the description of the lot and the term "AND EARLIER" appears. e.g. A JADE NECKLACE LIANGZHU CULTURE AND EARLIER, CIRCA 3900-2300 BC
- If no date, period or reign mark is mentioned in uppercase letters directly below the heading of the description of the lot, in Christie's opinion it is of uncertain date or late manufacture. e.g. A BLUE AND WHITE BOWL

CHINESE CERAMICS AND WORKS OF ART QUALIFIED HEADINGS

- When a piece is, in Christie's opinion, not of the period to which it would normally be attributed on stylistic grounds, this will be incorporated into the first line or the body of the text of the description.

e.g. A BLUE AND WHITE MING-STYLE BOWL
The Ming-style bowl is decorated with lotus scrolls...

- In Christie's qualified opinion, this object could be dated to the Kangxi period but there is a strong element of doubt. e.g. A BLUE AND WHITE BOWL POSSIBLY KANGXI PERIOD
- In Christie's opinion, this object is of a certain period, reign or dynasty. However, in Christie's qualified opinion, this object could belong to a particular culture but there is a strong element of doubt. e.g. A JADE BLADE NEOLITHIC PERIOD, POSSIBLY DAWENKOU CULTURE

重要通知及目錄編列方法之說明

重要通知

佳士得在受委託拍賣品中的權益

△ 部分或全部歸佳士得擁有的拍賣品

佳士得可能會不時提供佳士得集團旗下公司全部或部分擁有之拍賣品。該等拍賣品在目錄中於拍賣編號旁註有 △ 符號以資識別。如果佳士得在目錄中每一項拍賣品中均有所有權或經濟利益，佳士得將不會於每一項拍賣品旁附注符號，但會于正文首頁聲明其權益。

◦ 保證最低出售價

佳士得有時就某些受委託出售的拍賣品的拍賣成果持有直接的經濟利益。通常為其向賣方保證無論拍賣的結果如何，賣方將就拍賣品的出售獲得最低出售價。這被稱為保證最低出售價。該等拍賣品在目錄中於拍賣編號旁註有 ◦ 號以資識別。

◦◆ 第三方保證 / 不可撤銷的競投

在佳士得已經提供最低出售價保證，如果拍賣品未能出售，佳士得將承擔遭受重大損失的風險。因此，佳士得有時選擇與同意在拍賣之前該拍賣品提交一份不可撤銷的書面競投的第三方分擔該風險。如果沒有其他更高的競價，第三方承諾將以他們提交的不可撤銷的書面競投價格購買該拍賣品。第三方因此承擔拍賣品未能出售的所有或部分風險。該等拍賣品在目錄中注以符號 ◦◆ 以資識別。

第三方需要承擔風險，在自身不是成功競投人的情況下，佳士得將給予酬金給第三方。第三方的酬金可以是固定金額或基於成交價計算的酬金。第三方亦可以就該拍賣品以超過書面競投的價格進行競投。如果第三方成功競投，第三方必須全額支付不可撤銷的成交價及買方酬金。

我們要求第三方保證人向其客戶披露在給予保證的拍賣品持有的經濟利益。如果您通過顧問意見或委託代理人競投一件標示為有第三方融資的拍賣品，我們建議您應當要求您的代理人確認他 / 她是否在拍賣品持有經濟利益。

✠ 利益方的競投

當那些可能獲悉了拍賣品的底價或其他重要信息對拍賣品擁有直接或間接權益的一方可能進行競投時，我們會對該拍賣品附注符號 ✠。該利益可包括委託出售拍賣品的遺產受益人或者拍賣品的共同所有人之一。任何成功競得拍賣品的利益方必須遵守佳士得的業

務規定，包括全額支付拍賣品的買方酬金及適用的稅費。

目錄出版後通知

在有些情形下，在目錄出版後，佳士得可能會達成某種安排或意識到有需要附注目錄符號的競投。在此情況下，我們會在拍賣會前或拍賣該項拍賣品前做出通知。

其他安排

佳士得可能訂立與競投無關的協議。這些協議包括佳士得向賣方或者潛在買方提供借款或者預付金額或者佳士得與第三方分擔保證風險，但並不要求第三方提供不可撤銷的書面競投或參與拍賣品的競投。因為上述協議與競投過程無關，我們不會在目錄中注以符號。

請登錄 <http://www.christies.com/financial-interest/> 瞭解更多關於最低出售價保證以及第三方融資安排的說明。

目錄編列方法之說明

下列詞語於本目錄或拍賣品描述中具有以下意義。請注意本目錄內或拍賣品描述中有關創作者、時期、統治時期或朝代的所有陳述均在符合本公司之業務規定，買方須知，包括真品保證的條款下作出。該用詞的表達獨立於拍賣品本身的狀況或任何程度的修復。我們建議買方親身檢視拍賣品的狀況。佳士得也可按的要求提供書面狀況報告。

於本目錄「有保留的標題」下編列方法的詞語及其定義為對拍賣品創作者、時期、統治時期或朝代有所保留的陳述。該詞語的使用，乃依據審慎研究所得之佳士得專家之意見。佳士得及賣方對該詞語及其所陳述之本目錄拍賣品之創作者或拍賣品於某時期、統治時期或朝代內創作的真贗，並不承擔任何風險、法律責任和義務。而真品保證條款，亦不適用於以該詞語所描述的拍賣品。

目錄描述中資料的前後編排版面的英文版本與中文翻譯可能出現偏差。我們將會使用英文版本之目錄描述解決真品保證或「有保留的標題」下產生的任何問題以及爭議。

- 佳士得認為是屬於該創作者或藝術家之作品
例如：A YIXING TEAPOT BY CHEN MINGYUAN KANGXI PERIOD (1662-1722)

當作品描述標題的直接下方以英文大階字體註明作品的歸屬，以佳士得之意見認為，該作品屬於所註明之時期、統治時期或朝代。

例如：A BLUE AND WHITE BOWL QING DYNASTY, 18TH CENTURY

• 如日期、時期或統治時期款識出現在作品描述標題的直接下方並以英文大階字體註明款識為屬於某時期，則以佳士得之意見認為，該作品乃款識所示之日期、時期或統治時期之作品。

例如：A BLUE AND WHITE BOWL KANGXI SIX-CHARACTER MARK IN UNDERGLAZE BLUE AND OF THE PERIOD (1662-1722)

• 作品之歸屬以英文大階字體在其標題描述直接下方及以詞語「和更早」註明，以佳士得之意見認為，該作品不遲於該時期、統治時期或朝代創造。

例如：A JADE NECKLACE LIANGZHU CULTURE AND EARLIER, CIRCA 3900-2300 BC

• 在作品描述標題的直接下方沒有以英文大階字體註明日期、時期或統治時期款識之作品，以佳士得之意見認為，該作品之創作日期不詳或屬於較後時期創作之作品。

例如：A BLUE AND WHITE BOWL

中國瓷器及工藝精品

有保留的標題

• 以佳士得之意見認為，作品並非自歸屬於基於其風格其通常被認為的時期，此風格將會註明在描述的第一行或描述內容中。

例如：A BLUE AND WHITE MING-STYLE BOWL
The Ming-style bowl is decorated with lotus scrolls...

• 以佳士得有保留之意見認為作品可能或為康熙時期但佳士得對此有強烈懷疑。
例如：A BLUE AND WHITE BOWL POSSIBLY KANGXI PERIOD

• 佳士得認為作品屬於某時期、統治時期或朝代。但以佳士得有保留之意見認為，作品可能屬於某文化但佳士得對此有強烈懷疑。

例如：A JADE BLADE NEOLITHIC PERIOD, POSSIBLY DAWENKOU CULTURE

INTERNATIONAL ASIAN ART DEPARTMENT

GLOBAL MANAGING DIRECTOR

Heidi Yang
Tel: +852 2978 6804

CHINESE CERAMICS & WORKS OF ART

Pola Antebi,
*Deputy Chairman, Asia Pacific
International Director*
Tel: +852 2978 9950

Michael Bass, *International Director*
Tel: +1 212 636 2180

Chi Fan Tsang,
*Deputy Chairman, Asia Pacific
International Director*
Tel: +852 2760 1766

Rosemary Scott (Senior International
Academic Consultant)

BEIJING

Dai Dai
Felix Pei
Tel: +86 (0) 10 8572 7958

HONG KONG

Marco Almeida
Liang-Lin Chen
Timothy Lai
Cecilia Zi
Yunhan Sun
Tel: +852 2760 1766

LONDON

Kate Hunt
Tel: +44 207 752 3389

NEW YORK

Olivia Hamilton
Vicki Paloympis
Margaret Gristina
Michelle Cheng
Rufus Chen
Lucy Yan
Tel: +1 212 636 2180

PARIS

Tiphaine Nicoul
Camille de Foresta
Zheng Ma
Tel: +33 (0)1 40 76 83 75

SAN FRANCISCO

Andrew Lueck
Tel: +1 415 982 0982

SHANGHAI

Sherese Tong
Tel: +86 (0) 21 2226 1512

TAIPEI

Ruben Lien
Tel: +886 2 2322 0010

TOKYO

Masahiko Kuze
Tel: +81 (0) 3 6267 1766

CHAIRMAN

Jonathan Stone
Deputy Chairman, Asia Pacific
Tel: +852 2978 9989

CHINESE PAINTINGS

Kim Yu,
*International Specialist Head of
Chinese Paintings*
Tel: +852 2760 1766

BEIJING

Michael Xie
Vicky Liu
Tel: +86 (0) 10 8572 7939

HONG KONG

Jessie Or
Carmen Shek Cerne
Qiao Jing Jing
Amy Cheng
Dr Man Kung
Yorkie Tam
Frank Yang
Andy Kang
Tel: +852 2760 1766

NEW YORK

Dr Amy Riggs
Sophia Zhou
Tel: +1 212 641 5760

TOKYO

Seiji Inami
Tel: +81 (0) 3 6267 1778

CHAIRMAN

Athena Zonars
Deputy Chairman, Americas
Tel: +1 212 636 2177

JAPANESE & KOREAN ART

Katsura Yamaguchi,
*Managing Director/
International Director, Asian Art*
Tel: +81 (0)3 6267 1766

NEW YORK

Takaaki Murakami
Hua Zhou
Tel: +1 212 636 2160

BUSINESS DIRECTOR & REGIONAL MANAGING DIRECTORS

Rachel Orkin-Ramey
Tel: +1 212 636 2194

Valeria Severini
Tel: +33 (0)1 40 76 7286

Nicole Wright
Tel: +852 2978 9952

HEADS OF SALE MANAGEMENT & BUSINESS MANAGERS

Yanie Choi
Tel: +852 2978 9936

Holly Rittweger
Tel: +1 212 641 7529

Samantha Yuen
Tel: +852 2978 6703

ASIA PACIFIC REGIONAL OFFICES

BANGKOK

Prapavadee Sophonpanich
Tel: +66 (0)2 252 3685

BEIJING

Rebecca Yang
Tel: +86 (0) 10 8583 1766

JAKARTA

Charmie Hamami
Tel: +62 (0)21 7278 6268

KUALA LUMPUR

Charmie Hamami
Tel: +62 (0)21 7278 6268

MUMBAI

Sonal Singh
Tel: +91 222 280 7905

SEOUL

Jun Lee
Tel: +82 2 720 5266

SHANGHAI

Rebecca Yang
Tel: +86 (0)21 6355 1766

SINGAPORE

Dexter How
Tel: +65 6735 1766

TAIPEI

Ada Ong
Tel: +886 2 2736 3356

TOKYO

Katsura Yamaguchi
Tel: +81 (0)3 6267 1777

WORLDWIDE SALEROOMS AND OFFICES AND SERVICES

AMERICAS

BOGOTA
+571 635 54 00
Juanita Madrinan
(Consultant)

BUENOS AIRES
+54 11 43 93 42 22
Cristina Carlisle

CHICAGO
+1 312 787 2765
Catherine Busch

DALLAS
+1 214 599 0735
Caperia Ryan

HOUSTON
+1 713 802 0191
Jessica Phifer

LOS ANGELES
+1 310 385 2600
Sonya Roth

MEXICO CITY
+52 55 5281 5446
Gabriela Lobo

MIAMI
+1 305 445 1487
Jessica Katz

NEW YORK
+1 212 636 2000

PALM BEACH
+1 561 777 4275
David G. Ober (Consultant)

SAN FRANCISCO
+1 415 982 0982
Ellanor Notides

SANTIAGO
+56 2 2 2631642
Denise Ratnoff de Lira

SÃO PAULO
+55 21 3500 8944
Marina Bertoldi

TORONTO
+1 647 519 0957
Brett Sherlock (Consultant)

ASIA PACIFIC

BANGKOK
+66 (0) 2 252 3685
Prapavadee Sophonpanich

BEIJING
+86 (0)10 8583 1766
Rebecca Yang

HONG KONG
+852 2760 1766

JAKARTA
+62 (0)21 7278 6268
Charmie Hamami

KUALA LUMPUR
+62 (0)21 7278 6268
Charmie Hamami

MUMBAI
+91 (22) 2280 7905
Sonal Singh

SEOUL
+82 2 720 5266
Jun Lee

SHANGHAI
+86 (0)21 6355 1766
Rebecca Yang

SINGAPORE
+65 6735 1766
Dexter How

TAIPEI
+886 2 2736 3356
Ada Ong

TOKYO
+81 (0)3 6267 1766
Katsura Yamaguchi

EUROPE, THE MIDDLE EAST AND AFRICA

AMSTERDAM
+31 (0)20 57 55 255
Arno Verkade

BOLOGNA
+39 051 265 154
Benedetta Possati Vittori
Venenti (Consultant)

BRITTANY, THE LOIRE VALLEY & NORMANDY
+33 (0)6 09 44 90 78
Virginie Gregory

BRUSSELS
+32 (0)2 512 88 30
Astrid Centner-d'Oultremont

CENTRE AUVERGNE LIMOUSIN & BURGUNDY
+33 (0)6 10 34 44 35
Marine Desproges-Gotteron

CENTRAL & SOUTHERN ITALY
+39 348 520 2974
Alessandra Allaria
(Consultant)

COPENHAGEN
+45 2612 0092
Rikke Juul Brandt (Consultant)

DUBAI
+971 (0)4 425 5647

DÜSSELDORF
+49 (0)21 14 91 59 352
Arno Verkade

FRANKFURT
+49 170 840 7950
Natalie Radziwill

FLORENCE
+39 335 704 8823
Alessandra Niccolini di
Camugliano (Consultant)

GENEVA
+41 (0)22 319 1766
Eveline de Proyart

HAMBURG
+49 (0)40 27 94 073
Christiane Gräfin
zu Rantzau

IRELAND
+353 (0)87 638 0996
Christine Ryall (Consultant)

ISTANBUL
+90 (532) 558 7514
Eda Kehale Argün
(Consultant)

LISBON
+351 919 317 233
Mafalda Pereira Coutinho
(Consultant)
+974 7731 3615
Farah Rahim Ismail
(Consultant)

LONDON
+44 (0)20 7839 9060

MADRID
+34 (0)91 532 6626
Carmen Schjaer
Dalia Padilla

MILAN
+39 02 303 2831
Cristiano De Lorenzo

MONACO
+377 97 97 11 00
Nancy Dotta

MOSCOW
+7 495 937 6364
Daria Parfenenko

MUNICH
+49 (0)89 24 20 96 80
Marie Christine Gräfin Huyn

NORTH ITALY
+39 348 3131 021
Paola Gradi (Consultant)

OSLO
+47 949 89 294
Cornelia Svedman
(Consultant)

PARIS
+33 (0)1 40 76 85 85

POITOU CHARENTES AQUITAINE
+33 (0)5 56 81 65 47
Marie-Cécile Moueix

PROVENCE - ALPES CÔTE D'AZUR
+33 (0)6 71 99 97 67
Fabienne Albertini-Cohen

ROME
+39 06 686 3333
Marina Cicogna (Consultant)

SAUDI ARABIA
+44 (0)7904 250666
Zaid Belbagi (Consultant)

STUTTGART
+49 (0)71 12 26 96 99
Eva Susanne Schweizer

TEL AVIV
+972 (0)3 695 0695
Roni Gilat-Baharaff

TURIN
+39 347 2211 541
Chiara Massimello
(Consultant)

UK - CHANNEL ISLANDS
+44 (0)20 7839 9060

UK - ISLE OF MAN
+44 (0)20 7839 9060

UK - NORTH AND NORTHEAST
+44 (0)20 7839 9060

UK - NORTHWEST AND WALES
+44 (0)779 962 3780
Jane Blood

UK - SCOTLAND
+44 (0)131 225 4756
Robert Lagneau
David Bowes-Lyon (Consultant)

UK - SOUTH
+44 (0)20 7839 9060

VENICE
+39 041 277 0086
Bianca Arrivabene Valenti
Gonzaga (Consultant)

VIENNA
+43 (0)1 533 881214
Angela Baillou

ZÜRICH
+41 (0)44 268 1010
Jutta Nixdorf

AUCTION SERVICES

CHRISTIE'S AUCTION ESTIMATES
Tel: +1 212 492 5485
www.christies.com

CORPORATE COLLECTIONS
Tel: +1 212 636 2464
Fax: +1 212 636 4929
Email: gusudlow@christies.com

ESTATES AND APPRAISALS
Tel: +1 212 636 2400
Fax: +1 212 636 2370
Email: info@christies.com

MUSEUM SERVICES
Tel: +1 212 636 2620
Fax: +1 212 636 4931
Email: awhiting@christies.com

OTHER SERVICES

CHRISTIE'S EDUCATION
New York
Tel: +1 212 355 1501
Fax: +1 212 355 7370
Email: newyork@christies.edu

Hong Kong
Tel: +852 2978 6768
Fax: +852 2525 3856
Email: hongkong@christies.edu

London
Tel: +44 (0)20 7665 4350
Fax: +44 (0)20 7665 4351
Email: london@christies.edu

CHRISTIE'S INTERNATIONAL REAL ESTATE

New York
Tel: +1 212 468 7182
Fax: +1 212 468 7141
Email: info@christiesrealestate.com

London
Tel: +44 (0)20 7389 2551
Fax: +44 (0)20 7389 2168
Email: info@christiesrealestate.com

Hong Kong
Tel: +852 2978 6788
Fax: +852 2760 1767
Email: info@christiesrealestate.com

CHRISTIE'S FINE ART STORAGE SERVICES
New York
Tel: +1 212 974 4579
Email: newyork@cfass.com

CHRISTIE'S REDSTONE
Tel: +1 212 974 4500

• DENOTES SALEROOM

ENQUIRIES?— Call the Saleroom or Office **EMAIL**— info@christies.com
For a complete salerooms & offices listing go to christies.com



BID REGISTRATION FORM

For internal use only	
PADDLE NUMBER	STAFF BIDDER
	CTL

CHRISTIE'S
Bid Department
Tel: +852 2978 9910
bidsasia@christies.com

Account No. _____

Account Name _____

Email _____

Invoice Address _____

Sale Title _____

Sale Date _____

Sale No. _____

Please select one **Written Bid** **Telephone Bid**

Lot Number	Absentee Maximum Bid or Emergency Telephone Bid (in Hong Kong Dollars, excluding Buyer's Premium)	For internal use only	
		Bought <input checked="" type="checkbox"/> or <input type="checkbox"/> x	Under/bid to / Result

BIDDING INCREMENTS
Bidding generally starts below the low estimate and increases in steps (bid increments) of up to 10 per cent. The auctioneer will decide where the bidding should start and the bid increments. Written bids may be lowered to the next bidding interval.

HK\$1,000 to HK\$2,000 by HK\$100s
 HK\$2,000 to HK\$3,000 by HK\$200s
 HK\$3,000 to HK\$5,000 by HK\$200, 500, 800

(i.e.: HK\$4,200, HK\$4,500, HK\$4,800)
 HK\$5,000 to HK\$10,000 by HK\$500s
 HK\$10,000 to HK\$20,000 by HK\$1,000s
 HK\$20,000 to HK\$30,000 by HK\$2,000s
 HK\$30,000 to HK\$50,000 by HK\$2,000, 5,000, 8,000
 (i.e.: HK\$32,000, HK\$35,000, HK\$38,000)
 HK\$50,000 to HK\$100,000 by HK\$5,000s
 HK\$100,000 to HK\$200,000 by HK\$10,000s

HK\$200,000 to HK\$300,000 by HK\$20,000s
 HK\$300,000 to HK\$500,000 by HK\$20,000, 50,000, 80,000
 (i.e.: HK\$320,000, HK\$350,000, HK\$380,000)
 HK\$500,000 to HK\$1,000,000 by HK\$50,000s
 Above HK\$1,000,000 at auctioneer's discretion

The auctioneer may vary the increments during the course of the auction at his or her own discretion.

Complete for telephone bids only

Contact Name _____

Language _____

Tel No. (+ _____)

Alternative Tel No. (+ _____)

Complete for 3-way call only

Staff Name _____

Staff Tel No. (+ _____)

Staff Alternative Tel No. (+ _____)

Please send me a shipping quotation Yes No

Delivery address Invoice address
 Alternative address (complete below)

Address _____

The account name and address above will appear on the invoice for lots purchased with your assigned paddle number. Please check that the details are correct, as the details cannot be changed after the sale.

I have read the "Conditions of Sale - Buying at Christie's" and "Important Notices and Explanation of Cataloguing Practice" printed in the sale catalogue, as well as the "No Third Party Payment Notice" and agree to be bound by them. I understand that if my bid is successful the amount payable will be the sum of the hammer price and the buyer's premium (together with any taxes chargeable on the hammer price and buyer's premium in accordance with the Conditions of Sale - Buying at Christie's). Christie's ONLY accepts payment from the account holder named on the invoice. I have read the personal information section of the conditions of sale printed in the sale catalogue and agree to be bound by its terms.

Signature _____

Date _____



佳士得 競投表格

佳士得專用	
競投牌號	職員
CTL	

CHRISTIE'S 佳士得

投標部

Tel: +852 2978 9910

bidsasia@christies.com

拍賣項目 _____

拍賣日期 _____

拍賣編號 _____

客戶編號 _____

客戶姓名 _____

電郵地址 _____

賬單地址 _____

請選擇以下一項

書面競投

電話競投

拍賣品編號

書面最高競投價 或 緊急電話競投價
(港幣, 酬金不計在內)

佳士得專用

成功 ✓ 或 ✗

出價至 / 成交價

拍賣品編號	書面最高競投價 或 緊急電話競投價 (港幣, 酬金不計在內)	佳士得專用 成功 ✓ 或 ✗	出價至 / 成交價

競投價遞增幅度

競投一般由低於低端估價開始, 通常每次遞增之遞增幅度 (競投價遞增幅度) 最高為10%, 拍賣官會自行決定每輪競投價位及遞增幅度。書面時投價表與下列之遞增幅度一致, 表格則從以下一個遞增幅度:

- 0 例4,200, 4,500, 4,800 港元)
- 5,000-10,000 港元 500 港元
- 10,000-20,000 港元 1,000 港元
- 20,000-30,000 港元 2,000 港元
- 30,000-50,000 港元 2,000, 5,000, 9,000 港元
- 50,000-100,000 港元 2,000, 38,000 港元
- 1,000-2,000 港元 100 港元
- 2,000-3,000 港元 200 港元
- 3,000-5,000 港元 200, 500, 800 港元

- 200,000-300,000 港元 20,000 港元
- 300,000-500,000 港元 20,000, 50,000, 80,000 港元
- 500,000-1,000,000 港元 30,000 港元
- 1,000,000 港元或以上 拍賣官自行決定
- 200,000-300,000 港元 20,000 港元
- 300,000-500,000 港元 20,000, 50,000, 80,000 港元
- 500,000-1,000,000 港元 30,000 港元
- 1,000,000 港元或以上 拍賣官自行決定

在拍賣時拍賣官可酌情更改每次增加之幅度。

只供電話競投填寫

聯絡姓名 _____

拍賣語言 _____

聯絡電話 (+) _____

其他聯絡電話 (+) _____

只供三方電話競投填寫

職員姓名 _____

職員聯絡電話 (+) _____

職員其他聯絡電話 (+) _____

請提供付運報價 是 否

送貨地址 賬單地址

其他地址 (請於下方填寫)

地址 _____

客戶名稱及地址會列印在附有是次登記之競投應繳編號的發票上; 付款資料於拍賣會完結後將不能更改, 請確定以上資料確實無誤。

本人已細閱載於目錄內之買家須知、重要通知及目錄編列方法之說明 及不接受第三方支付款通告, 並同意遵守所有規定。本人知悉如競投成功, 本人應付之購買款項為成交價及買方酬金 (以及所有基於成交價和買方酬金而產生的稅費; 及符合業務規定, 買方須知。佳士得只可接受發票上所列明的客戶之付款。本人已細閱載於目錄內業務規定之個人信息條款, 並同意遵守該規定。

簽署 _____

日期 _____

BIDDER REGISTRATION FORM

Paddle No.

We encourage new clients to register at least 48 hours in advance of a sale to allow sufficient time to process the registration.

Please complete and sign this form and send it to us by email registrationasia@christies.com.

A Bidder's Detail

The name and address given above will appear on the invoice for lots purchased with your assigned paddle for this registration. Please check that the details are correct as the invoice cannot be changed after the sale.

Account Name Account No.

Address

..... Post/Zip Code

Phone No.

Please verify email address for post-sale communication

Shipping Quote Required.

Shipping Address (Same as the above address):

.....

B Identity Documents and Financial References

If you are a new client, please provide copies of the following documents. **Individuals:** government-issued photo identification (such as a national identity card or passport) and, if not shown on the ID document, proof of current address, for example a utility bill or bank statement. **Corporate clients:** a certificate of incorporation, proof of company address, photo ID copy of the authorized bidder, letter of authorization duly signed by the director or the legal representative and, where applicable, chopped with company stamp and official document listing directors and shareholders. **Other business structures such as trusts, offshore companies or partnerships:** please contact the Credit Department at +852 2978 6870 for advice on the information you should supply.

If you are registering to bid on behalf of someone who has not previously bid or consigned with Christie's, please attach identification documents for yourself as well as the person on whose behalf you are bidding, together with a signed letter of authorisation from the person.

New clients, clients who have not made a purchase from any Christie's office within the last 12 months, and those wishing to spend more than on previous occasions will be asked to supply a bank reference and/or a recent bank statement and we may also require a deposit as we deem appropriate as a condition of allowing you to bid. Deposit can be paid by using any of the following methods: credit card(s) acceptable to Christie's; wire transfer; cashier order or cheque. We cannot accept payment from third parties and agents. If you are asked to provide a deposit, it may be made by calling at +852 2978 5371. Your bidder registration will not be considered complete until we receive payment of the deposit in full and cleared funds.

To apply for a high value lot ("HVL") paddle, you will need to pay a HVL deposit, which we will calculate for you. Generally it will be the higher of: (i) HK\$ 1,600,000 or (ii) 20% of the aggregate low estimates of the HVLs you intend to bid on; or (iii) such other amount as we may determine from time to time. The HVL registration procedure applies even if you have already registered to bid in our sales on other lots. We reserve the right to change our HVL registration procedure and requirements from time to time without notice.

C Sale Registration

- | | |
|---|--|
| <input type="checkbox"/> 19866 Fine & Rare Wines and Spirits | <input type="checkbox"/> 16900 20 th and 21 st Century Art Evening Sale * |
| <input type="checkbox"/> 19867 Fine & Rare Wines and Spirits | <input type="checkbox"/> 16902 21 st Century Art Day Sale * |
| <input type="checkbox"/> 19871 Handbags & Accessories | <input type="checkbox"/> 16901 20 th Century Art Day Sale * |
| <input type="checkbox"/> 19868 Important Watches * | |
| <input type="checkbox"/> 21185 Important Watches (Afternoon Session) * | <input type="checkbox"/> 20196 The Chang Wei-Hwa Collection of Archaic Jades Part - Spring and Autumn & Warring States Periods |
| <input type="checkbox"/> 19870 Hong Kong Magnificent Jewels * | <input type="checkbox"/> 20195 The Songde Tang Collection - Song Dynasty Ceramics |
| <input type="checkbox"/> 20161 Fine Chinese Classical Paintings and Calligraphy * | <input type="checkbox"/> 20163 Important Chinese Ceramics and Works of Art * |
| <input type="checkbox"/> 20162 Fine Chinese Modern and Contemporary Ink Paintings * | |

* If you intend to bid on: (i) any lot in the 20th and 21st Century Art Evening Sale; or (ii) a lot the low estimate of which is HK\$ 8 million or above, i.e. a high value lot ("HVL"), please tick the box below.

I wish to apply for a HVL paddle.

Please indicate the bidding level you require:

- | | | |
|--|---|--|
| <input type="checkbox"/> HK \$ 0 - 500,000 | <input type="checkbox"/> HK \$ 500,001 - 2,000,000 | <input type="checkbox"/> HK \$ 2,000,001 - 4,000,000 |
| <input type="checkbox"/> HK \$ 4,000,001 - 8,000,000 | <input type="checkbox"/> HK \$ 8,000,001 - 20,000,000 | <input type="checkbox"/> HK \$ 20,000,000 + |

D Declarations

- I have read the "Conditions of Sale - Buying at Christie's" and "Important Notices and Explanation of Cataloguing Practice" printed in the sale catalogue, as well as the "No Third Party Payment Notice" and agree to be bound by them.
- I have read the personal information section of the conditions of sale printed in the sale catalogue and agree to be bound by its terms.
- I understand that if I have not completed the high value lot pre-registration before the auction Christie's may refuse my bid for high value lots.
- If you are not successful in any bid and do not owe any Christie's group company any money, the deposit will be refunded to you by way of wire transfer or such other method as determined by Christie's. please make sure that you provide your bank details to us.

Please tick if you are a new client and would like to receive information about sales, events and other services offered by the Christie's group and its affiliates by e-mail. You can opt-out of receiving this information at any time.

Name Signature Date

Christie's Hong Kong Limited

22nd Floor Alexandra House, 18 Chater Road, Central, Hong Kong Tel: +852 2760 1766
www.christies.com

建議新客戶於拍賣舉行前至少 48 小時辦理登記，以便有充足時間處理登記手續。

請填妥並簽署本表格然後電郵至 registrationasia@christies.com。

A 投標者資料

客戶名稱及地址會列印在附有是次登記之競投牌編號的發票上；付款資料於拍賣會完結後將不能更改，請確定以上資料確實無誤

客戶名稱 客戶編號

客戶地址

..... 郵區編號

電話號碼

請確認電郵地址以作售後服務用途

請提供運費報價。

運送地址（ 同上述地址相同）：

B 身份證明文件及財務證明

如閣下為新客戶，請提供以下文件之副本。**個人**：政府發出附有相片之身份證明文件（如國民身份證或護照），及（如身份證明文件未有顯示現時住址）現時住址證明，如公用事業帳單或銀行月結單。**公司客戶**：公司註冊證書、公司地址證明、被授權競投者附有相片之身份證明文件，由公司董事或法人按公司規定簽署及（若有）蓋有公司章的競投授權書，以及列出所有董事及股東的公司文件。**其他業務結構，如信託機構、離岸公司或合夥公司**：請與信用部聯絡，以諮詢閣下須提供何種資料，電話為 +852 2978 6870。

如閣下登記代表未曾於佳士得競投或託售拍賣品人士競投，請附上閣下本人的身份證明文件，以及閣下所代表競投人士的身份證明文件，連同該人士簽署的授權書。

新客戶、過去十二個月內未有在佳士得投得拍賣品，及本次擬出價金額高於過往之客戶，須提供銀行信用證明及／或近期的銀行月結單，亦或須繳付本公司指定的有關保證金作為允許閣下競投的先決條件。閣下可以佳士得接受之信用卡、電匯、本票或支票繳付保證金。請注意佳士得概不接受第三方或代理人代付之款項。如閣下被要求提供保證金，閣下可致電 +852 2978 5371 安排付款。閣下的競投申請會在我們收到保證金的全額付款後方可作實。

如需申請高額拍品競投號碼牌，閣下需繳付適用於高拍品的保證金 — 一般為 (i) 港幣 1,600,000 元；或 (ii) 閣下擬競投的全部拍賣品低價總額之 20%；或 (iii) 其他我們不時設定的金額（以較高者為準）。即使閣下已於佳士得其他拍賣登記，閣下仍需為高拍品按高拍品登記程序進行登記。佳士得保留不時更改高拍品登記程序及要求的權利而不作另行通知。

C 拍賣項目登記

- | | |
|--|--|
| <input type="checkbox"/> 19866 佳士得珍罕名釀及烈酒 | <input type="checkbox"/> 16900 二十及二十一世紀藝術 晚間拍賣* |
| <input type="checkbox"/> 19867 佳士得珍罕名釀及烈酒 | <input type="checkbox"/> 16902 二十一世紀藝術 日間拍賣* |
| <input type="checkbox"/> 19871 典雅傳承：手袋及配飾 | <input type="checkbox"/> 16901 二十世紀藝術 日間拍賣* |
| <input type="checkbox"/> 19868 精緻名錶* | |
| <input type="checkbox"/> 21185 精緻名錶（下午拍賣）* | <input type="checkbox"/> 20196 雲中玉筵 重要亞洲私人古玉收藏：春秋戰國篇 |
| <input type="checkbox"/> 19870 瑰麗珠寶及翡翠首飾* | <input type="checkbox"/> 20195 頌德堂中國宋代瓷器 - 淡掃蛾眉 |
| <input type="checkbox"/> 20161 中國古代書畫* | <input type="checkbox"/> 20163 重要中國瓷器及工藝精品* |
| <input type="checkbox"/> 20162 中國近現代及當代書畫* | |

*如閣下有意競投 (i) 佳士得二十及二十一世紀藝術晚間拍賣之任何拍賣品；或 (ii) 其他類別拍賣低價為港幣 8,000,000 元或以上的拍賣品，即高拍品，請於以下方格劃上「✓」號。

本人有意登記高拍品競投牌。

請提供閣下之競投總額：

- | | | |
|---|--|---|
| <input type="checkbox"/> 港幣 0 - 500,000 | <input type="checkbox"/> 港幣 500,001 - 2,000,000 | <input type="checkbox"/> 港幣 2,000,001 - 4,000,000 |
| <input type="checkbox"/> 港幣 4,000,001 - 8,000,000 | <input type="checkbox"/> 港幣 8,000,001 - 20,000,000 | <input type="checkbox"/> 港幣 20,000,000 + |

D 聲明

- 本人已細閱載於目錄內之末的業務規定、買家須知、重要通告及目錄編列方法之說明及不接受第三方支付款通告，並同意遵守所有規定。
 - 本人已細閱載於目錄內業務規定之個人信息條款，並同意遵守該規定。
 - 本人知悉若本人未於拍賣前完成高拍預先登記，佳士得將有權不接受任何高拍品之競投。
 - 若閣下未能成功競投任何拍賣品，對佳士得或佳士得公司集團亦無任何欠款，保證金將以電匯方式或佳士得決定之其他方式退還閣下。請確保閣下已提供有關之銀行資料詳情。
- 如閣下為新客戶並希望透過電郵接收本公司將舉行的拍賣、活動或其他由佳士得集團及其聯營公司提供的服務資料，請於方格內劃上「✓」號。閣下可隨時選擇拒收此訊息。

姓名 簽署 日期

CHRISTIE'S INTERNATIONAL PLC

François Pinault, Chairman
 Guillaume Cerutti, Chief Executive Officer
 Jussi Pykkänen, Global President
 François Curiel, Chairman, Europe
 Jean-François Palus
 Stéphanie Renault
 Héloïse Temple-Boyer
 Sophie Carter, Company Secretary

INTERNATIONAL CHAIRMEN

Stephen Lash, Chairman Emeritus, Americas
 The Earl of Snowdon, Honorary Chairman, EMEA
 Charles Cator, Deputy Chairman, Christie's Int.
 Xin Li-Cohen, Deputy Chairman, Christie's Int.

CHRISTIE'S ASIA PACIFIC

Francis Belin, President
 Heidi Yang, Global Managing Director, Asian and World Art

CHAIRMAN'S OFFICE

Jonathan Stone, Deputy Chairman
 Pola Antebi, Deputy Chairman
 Eric Chang, Deputy Chairman
 Charmie Hamami, Deputy Chairman
 Elaine Holt, Deputy Chairman
 Evelyn Lin, Deputy Chairman
 Ada Ong, Deputy Chairman
 Vickie Sek, Deputy Chairman
 Chi Fan Tsang, Deputy Chairman

SENIOR VICE PRESIDENTS

Cristian Albu, Marco Almeida, Karen Au Yeung,
 Audrey Shum, Bo Tan, Katsura Yamaguchi,
 Kim Yu

VICE PRESIDENTS

Alexandre Bigler, Carmen Shek Cerne, Janet Chang,
 Liang-Lin Chen, Fung Chiang, Isaac Choi,
 Betsy Chow, Jennie Chu, Emily Fisher,
 Georgina Hilton, Jacky Ho, Dexter How,
 Seiji Inami, Yunah Jung, Imogen Kerr,
 Elaine Kwok, Hak Jun Lee, Stephenie Leung,
 Ruben Lien, Georgina Liu, Gabrielle Mak,
 Sara Mao, Mindy Melrose, Lillian Ng,
 Jasmin Ngai, Jessie Or, Terence Poon,
 Jing Jing Qiao, Sonal Singh, Prapadavee Sophonpanich,
 Winsy Tsang, Nicole Wright, Alan Yip,
 Harriet Yu, Dina Zhang, Grace Zhuang

ASSOCIATE VICE PRESIDENTS

Nga Lam Chan, Winifred Chan, Kelly Chang,
 Lesley Chen, Amy Cheng, Henry Cheng,
 Joanne Cheng, Terry Choi, Yanie Choi,
 Simon Chow, Eric Chung, Dai Dai,
 Helen Fung, Gigi Ho, Phylbie Ho,
 Yiwen Huang, Chie Kawasaki, Masahiko Kuze,
 Annie Lee, Joyce Lee, Kevyn Leung,
 Caroline Liang, Louis Lin, Vicky Liu,
 Yu-Shan Lu, Tony Ng, Cissy Ngan,
 Benson Or, Stephanie Pang,
 Felix Pei, Zhongwei Qin, Joe So,
 CY Tang, Sherese Tong, Ada Tsui,
 Mandy Wang, Aaron Wong, Michael Xie,
 Maxwell Yao, Mia Zhang

19/10/2021

HONG KONG AUCTION CALENDAR

FINE & RARE WINE AND SPIRITS

Sale number: 19866
THURSDAY 25 NOVEMBER
11.00 AM

FINE & RARE WINE AND SPIRITS

Sale number: 19867
FRIDAY 26 NOVEMBER
10.30 AM

HANDBAGS & ACCESSORIES

Sale number: 19871
FRIDAY 26 NOVEMBER
2.00 PM
 Viewing: 26 November

IMPORTANT WATCHES

Sale number: 19868
SATURDAY 27 NOVEMBER
11.00 AM
 Viewing: 25-26 November

IMPORTANT WATCHES (AFTERNOON SESSION)

Sale number: 21185
SATURDAY 27 NOVEMBER
4.00 PM
 Viewing: 25-26 November

HONG KONG MAGNIFICENT JEWELS

Sale number: 19870
SATURDAY 28 NOVEMBER
2.00 PM
 Viewing: 25-28 November

FINE CHINESE CLASSICAL PAINTINGS AND CALLIGRAPHY

Sale number: 20161
MONDAY 29 NOVEMBER
2.30 PM
 Viewing: 26-29 November

FINE CHINESE MODERN AND CONTEMPORARY INK PAINTINGS

Sale number: 20162
TUESDAY 30 NOVEMBER
10.00 AM & 2.30 PM
 Viewing: 26-29 November

20TH AND 21ST CENTURY ART EVENING SALE

Sale number: 16900
WEDNESDAY 1 DECEMBER
7.30 PM
 Viewing: 26 November - 1 December

21ST CENTURY ART DAY SALE

Sale number: 16902
THURSDAY 2 DECEMBER
10.30 AM
 Viewing: 26 November - 1 December

20TH CENTURY ART DAY SALE

Sale number: 16901
THURSDAY 2 DECEMBER
12.30 PM
 Viewing: 26 November - 1 December

THE CHANG WEI-HWA COLLECTION OF ARCHAIC JADES - SPRING AND AUTUMN & WARRING STATES PERIODS

Sale number: 20196
FRIDAY 3 DECEMBER
10.30 AM
 Viewing: 26 November - 2 December

THE SONGDE TANG COLLECTION - SONG DYNASTY CERAMICS

Sale number: 20195
FRIDAY 3 DECEMBER
2.00 PM
 Viewing: 26 November - 2 December

IMPORTANT CHINESE CERAMICS AND WORKS OF ART

Sale number: 20163
FRIDAY 3 DECEMBER
3.00 PM
 Viewing: 26 November - 2 December

22/10/2021







CHRISTIE'S 佳士得

22ND FLOOR ALEXANDRA HOUSE 18 CHATER ROAD CENTRAL HONG KONG
香港 中環 遮打道18號 歷山大廈22樓